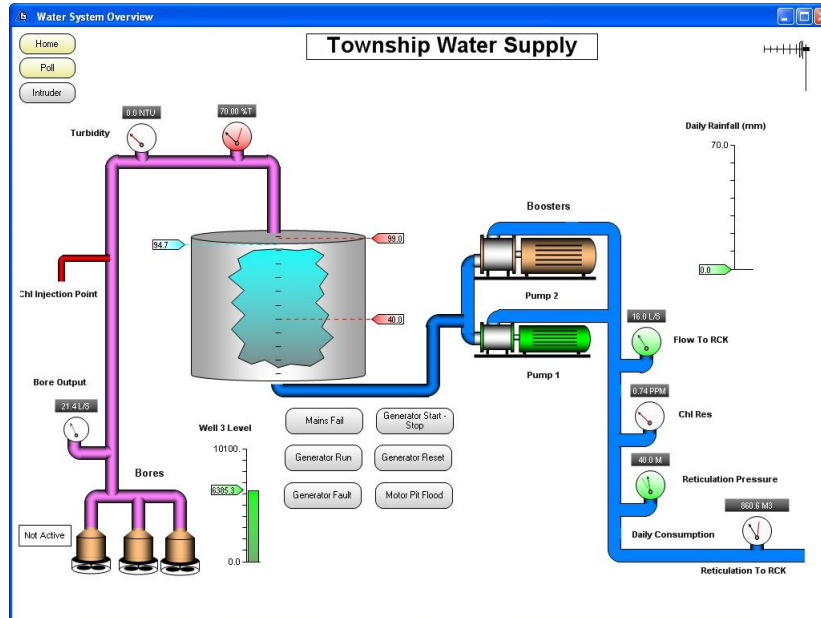


## DATRANVue - Graphical User Interface



DATRANVue is a quality and cost effective GUI (Graphical User Interface) for the DATRAN™ VI SCADA software.

DATRANVue is a simple and rapid way to produce a graphical and user friendly system or process representation.

Interactive navigation buttons allow you to “click through” from a map screen to system status and alarms. DATRANVue can be easily distributed to many users, each with their own access levels.

DATRANVue comprises two software components:

DATRANVue Designer - To create and design the graphics

DATRANVue Runtime - To display and deploy the GUI to multiple users

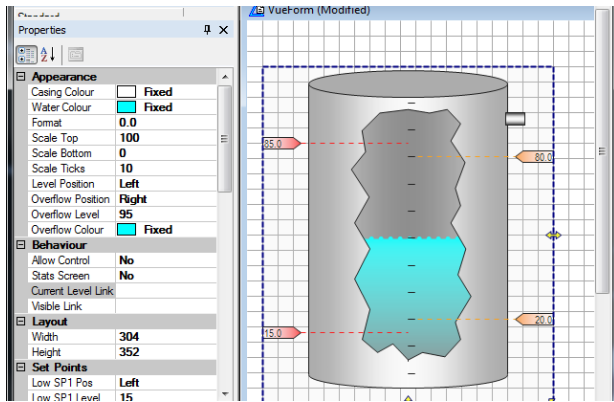
### Key Features include:

- Control capability - Simply click buttons to start and stop pumps etc.
- Automatic screen size scaling and pan/zoom features
- Simple and direct system integration - no need to create separate Tag names and no I/O Tag limit
- Fully configurable graphics, including size, layout and attributes
- Change display colour and animation to show status of pump/motor etc
- Multiple icon library including user definable graphic option
- HTML Wrapper - Automatically create JPG images of screens for use on the internet
- Electronic Help in HTML format

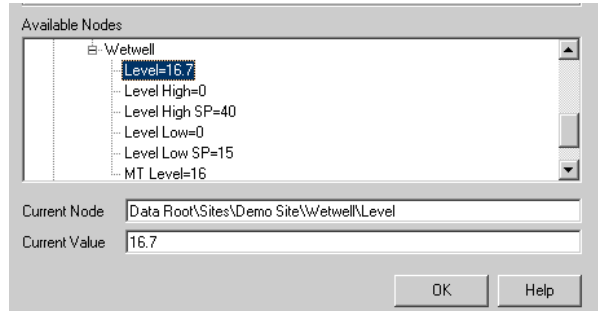
### Key Benefits include:

- User friendly real time monitoring and control of site status/usage
- Highly efficient TCP/IP network communications, ideal for remote network users
- Common display method across all sites reducing operator training and increasing familiarisation
- Improved alarm visibility and response times
- The most cost effective solution available, a frac-

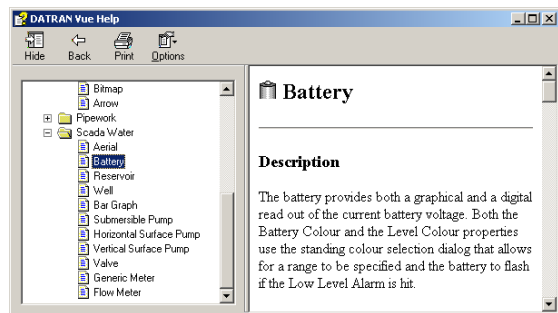
## Fully Configurable Graphics



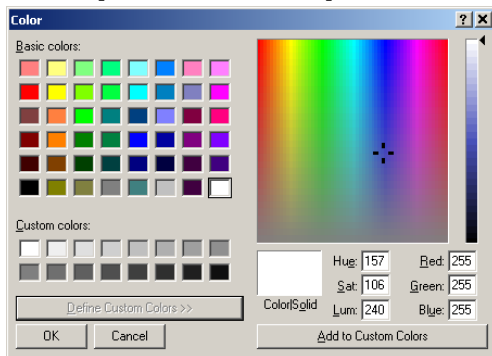
## Point and Click Selection - No Tags



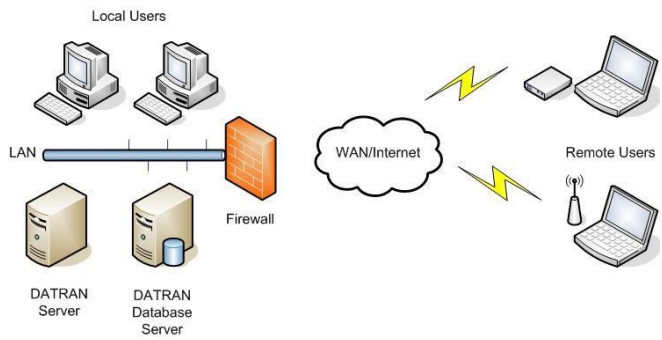
## Electronic Help—HTML



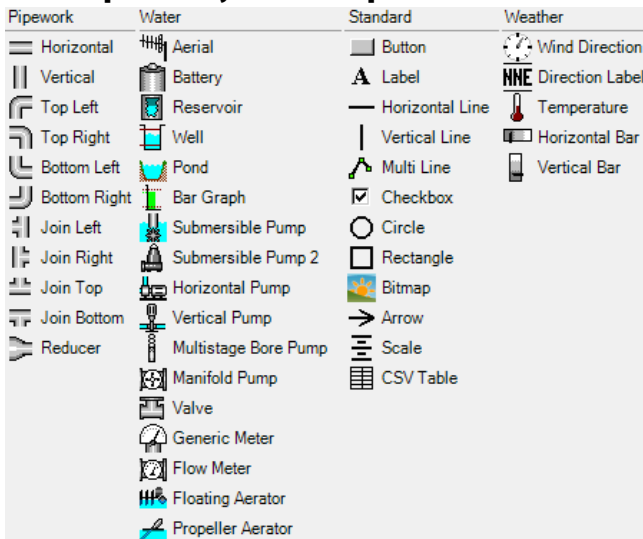
## Multiple Colour Options



## Multiple User Network Layout



## Multiple Object Templates



## New Weather Symbols

