



**DATRAN™**

## PRODUCT RELEASE NOTICE

# **Q90 Configuration & Diagnostic Utility**

## **RELEASE 3.29**

## **May 2011**

QTech Data Systems Ltd  
Unit 6 Amuri Park  
404 Barbadoes Street  
Christchurch  
New Zealand

Phone: +64 3 3663713  
Fax: +64 3 3652815  
E-mail: [sales@qtech.co.nz](mailto:sales@qtech.co.nz)  
Web: [www.qtech.co.nz](http://www.qtech.co.nz)

© 2011 QTech Data Systems Ltd

Issue 1

DATRAN is a registered trademark of QTech Data Systems Ltd

## Table of Contents

Table of Contents .....	2
Introduction.....	3
Summary of New Features .....	4
Installation Procedure .....	5
Disclaimer .....	7
Ongoing Support.....	7

## Introduction

Q90 version 3.29 is now available to all users of DATRAN Q03 based hardware.

QTech strongly recommend that all users update to this current release.

**NOTE: Q90 version 3.29 is required for using Q03 firmware version 5.23 released in May 2011.**

If Q90 is used with firmware older than version 4.3 (Feb 2003), it will automatically revert to the old style Q90 version 1.05.

However, this old firmware should be upgraded to provide all of the enhancements.

The following sections of this document describe the installation procedure and all of the enhancements and fixes.

Please ensure that Administrator privileges are available on the PC before installing.

Your feedback on the product and possible future enhancements is always appreciated. Please contact QTech on +64 3 366 3713, or email to [techsupport@qtech.co.nz](mailto:techsupport@qtech.co.nz).

***The DATRAN team***

## Summary of New Features

The following new features have been added since the last general release v3.28:

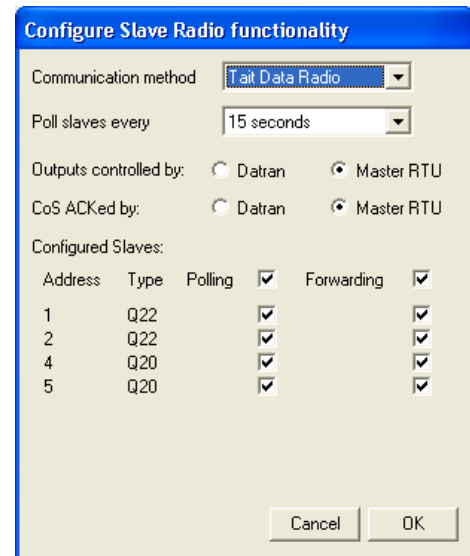
The new Q03 features mentioned are documented in the Q03 v5.23 release notes.

- **Windows 7 compliance**

Many customers have now made the transition to the latest version of Windows, and previous versions of Q90 required a small amount of configuration by hand to get them running. The installation program now takes care of everything for you so you can get up and running straight away.

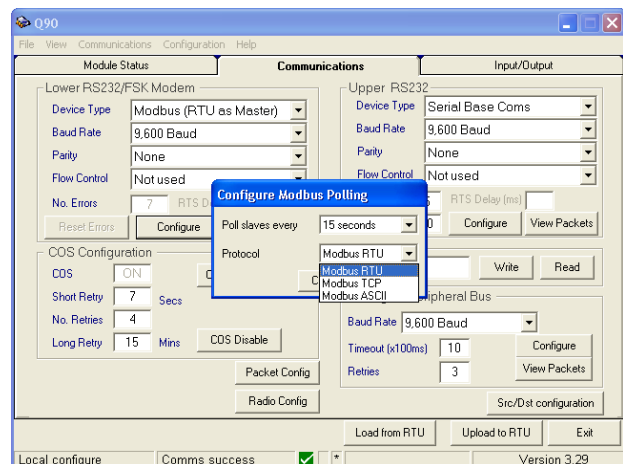
- **Store and Forward**

There have been a number of enhancements to the configuration of the Master / Slave Store and Forward capability of the RTU. At the top of the dialogue, you may now select the communication method, which will cause the RS232 properties to be populated with sensible defaults, including baud rate, parity and flow control. In addition, Q03 v5.23 introduced the option to allow Datran to acknowledge Slave changes of state, providing both polling and forwarding are enabled. There is a new radio button selection to control this behaviour.



- **Modbus ASCII**

With the addition of Modbus ASCII support, the Q03 now supports all three major versions of the Modbus protocol (RTU, TCP and ASCII). The latter may be selected as usual in the Modbus configuration dialogue, and is available for use as both a Master and a Slave.



## Installation Procedure

Q90 is available to all registered users as a low cost upgrade CD from QTech.

When the supplied CD is inserted into your CDROM drive it should automatically run the installation menu system. If you have CD Autorun turned off, then using File Explorer, navigate to the *MainMenu* folder on the CD and double click on "Q90setup3\_29.exe".

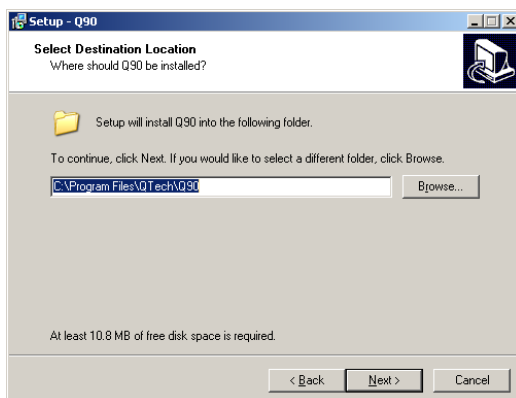
At any stage, pressing **Cancel** will exit the installation and leave the system unchanged.



This is the Welcome screen, click **Next**.

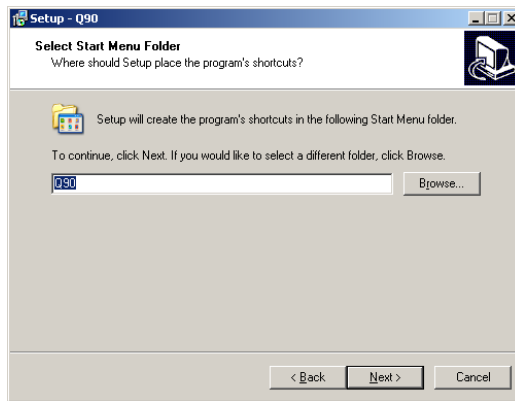


This is the license information screen. It contains all of the details of the license for using Q90. If you wish to continue, you must first accept the agreement, and then click **Next**, otherwise click **Back**.



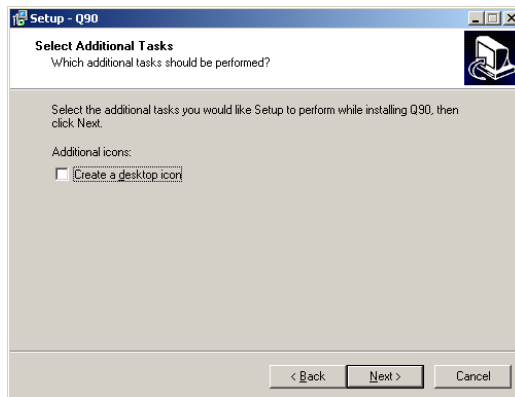
This is the destination screen, where you select where you would like Q90 to be installed. If there is a previous version of Q90 on your PC, it will automatically detect the location and overwrite it by default.

If you wish to continue with the installation click **Next**, otherwise click **Back**.

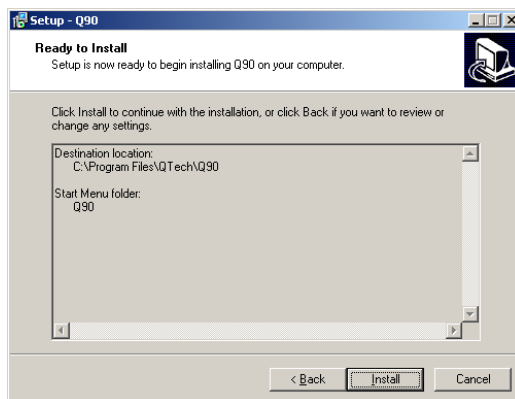


The Q90 installation program will create shortcuts in your Start menu. Use this dialogue to choose under which folder they will go.

To continue with the installation click **Next**, otherwise click **Back**.



In addition to the menu shortcuts, the program can create a shortcut on your desktop if you wish. Tick the box if you would like it to do so, and then click **Next**, otherwise click **Back**.



This is the completion screen. Check that the details are correct - you can still go back and change them if not. Otherwise when you are ready, click **Install**.



While the program is installing, you will see a progress bar. Once this is complete, you will see the screen shown here. If you would like to launch Q90 straight away, tick the box and click **Finish**. Otherwise click **Finish** to close the window.

The installation is now complete.

## Disclaimer

*Whilst every endeavour has been made to ensure that the product description is accurate, details are subject to change. QTech Data Systems Ltd reserves the right to alter the system specifications if required.*

*QTech Data Systems Ltd does not warrant the suitability of this product for any particular application as the conditions in which it is used are beyond our control. This is not withstanding warranty of merchantability.*

## Ongoing Support

QTech Data Systems Ltd encourages clients to configure their systems to allow remote access via a direct-connect modem or internet based VPN. This allows for off-site support from QTech Data Systems Ltd staff.

A support services maintenance agreement is available (or users can upgrade from an existing maintenance agreement).

All support will be charged at \$100 +GST per hour plus disbursements.