

PRODUCT RELEASE NOTICE

DATRAN DLP IDE

(Down Loadable Program Integrated Development Environment)

RELEASE 2.30

July 2010

Table of Contents

Table of Contents	2
Introduction	3
Prerequisites for Upgrade	4
Summary of New Features	5
Summary of Issues Resolved	7
Installation Procedure	9
Disclaimer	11
Ongoing Support.....	11

Introduction

QTech are delighted to launch DATRAN DLP IDE version 2.30.

DLP IDE is intended to simplify the writing of DLPs (control programs) for DATRAN RTUs.

This version has many user interface and technical improvements including the introduction of a “Watch List”.

DATRAN DLP IDE version 2.30, combined with RTU firmware v5.21 and DATRAN VI v6.66, also provides the ability to dynamically modify RTU data logging via the DLP.

This release comes with a user friendly Setup Wizard to help simplify installation.

QTech strongly recommends that all DATRAN integrators and DLP developers upgrade to this version of DLP IDE.

The following sections of this document describe the installation procedure and the enhancements.

Your feedback on the product and possible future enhancements is always appreciated. Please contact QTech on +64 3 366 3713, or email to techsupport@qtech.co.nz.

Prerequisites for Upgrade

This version replaces all previous versions of DLP-IDE.

- **Software Licensing**

If you are an existing user no action is required.

For new users, DLP IDE is individually licensed to each machine. Before installing the software please ensure you have a license key from QTech. The license key is linked to the HDD label of the target machine.

Multiple user licenses are available as required.

- **Close Applications**

Before installing it is recommended that you close all applications running on the target machine.

- **PC Reboot**

No rebooting of the target machine is required after the installation.

Summary of New Features

New Component Features:

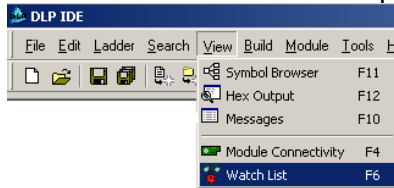
- Watch List**

Watch List is an interactive tool that allows you to select I/O points and monitor their behaviour.

This allows you to test and debug DLPs in real time, before deploying to a live system.

Watch Name	Value	Last Time Read	Last Time Written	I/O Number	Display Mode	Enabled
NDIN10	0	20:03:19, Thu...	20:00:22, Thu, ...	10	ADC Value	Yes
NDIN11	0	20:03:19, Thu...	20:00:22, Thu, ...	11	ADC Value	Yes
NDIN12	0	20:03:19, Thu...	20:00:22, Thu, ...	12	ADC Value	Yes
NDIN13	0	20:03:19, Thu...	20:00:22, Thu, ...	13	ADC Value	Yes
NDIN14	0	20:03:19, Thu...	20:00:22, Thu, ...	14	ADC Value	Yes
NDOUT1	0	20:03:19, Thu...	20:00:22, Thu, ...	1	ADC Value	Yes
RAIN1	0	20:03:19, Thu...	20:00:22, Thu, ...	1	ADC Value	Yes
NDIN10	0	20:03:19, Thu...	20:00:22, Thu, ...	10	ADC Value	Yes
TAIN1	0	20:03:19, Thu...	20:00:22, Thu, ...	1	ADC Value	Yes
10MIN_INTENSITY	0	20:03:36, Thu...	20:03:35, Thu, ...	3	ADC Value	Yes
DAILY_MM	0	20:03:40, Thu...	20:03:40, Thu, ...	1	ADC Value	Yes
HOURLY_MM	0	20:03:46, Thu...	20:03:46, Thu, ...	4	ADC Value	Yes

The Watch List can be displayed via the View menu or pressing F6.



Once the Watch List is displayed on screen, right click in the right hand pane to configure/edit.

Watch List allows you to monitor all of the following I/O types in real time:

- Real digital inputs (RDIN)
- Real digital outputs (RDOOUT)
- Telemetry digital inputs (TDIN)
- Telemetry digital outputs (TDOUT)
- Notional digital inputs (NDIN)
- Notional digital outputs (NDOOUT)
- Real analogue inputs (RAIN)
- Real analogue outputs (RAOUT)
- Telemetry analogue inputs (TAIN)
- Telemetry analogue outputs (TAOUT)
- Notional analogue inputs (NAIN)
- Notional analogue outputs (NAOUT)

DLP-IDE comes with an online help file which provides complete details of this new function.

Summary of Issues Resolved

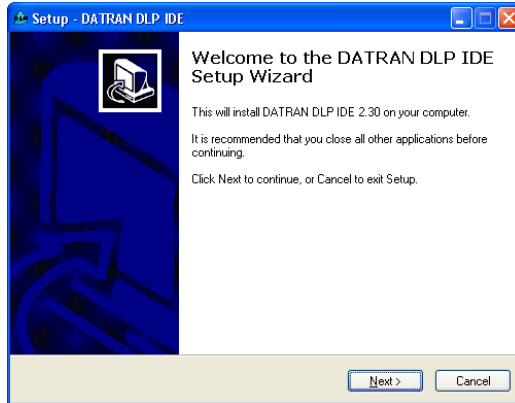
The following issues/features have been resolved since DLP IDE version 2.04.

QTech ID	Description
3407	Ability to set the time/date manually with DLP IDE
3716	Associate ASM, DLP, AST and LDR files to DATRAN DLP IDE
3732	The changes in the way the CMFail and ExCFail flags work for v5.11 firmware should be documented in the help file for DLP IDE
3748	Ambiguous COSMASK syntax
3787	Empty lines removed from printed document
3832	Icon inconsistent
3983	Description of the behaviour of ADDR is wrong.
4141	A new system analogue has been added i.e. LOG_USED and it contains the number of bytes used in the data logging buffer.
4142	Notional CoS mask support has been added. This new command controls Changes of State caused by Notional Digital Inputs (NDIs).
4178	Fault in COSMASK and NCOSMASK arguments fixed.
4214	Make print preview dialogue better
4215	Stop the user from opening an empty DLP file
4216	The nodes in the tree view get messed up after un-docking
4217	Does not provide the user with a user friendly message when compiling empty ASM file
4218	Symbol browser no TMR's are displayed
4220	Can no longer correctly jump to points from Symbol Browser after editing
4221	Compiler allows > 1 identifier to be equated to a given label
4222	A reference to the position of where the label is equated is not available
4223	Duplicate references found in Symbol Browser
4224	Allow a user to filter by analogue and digital symbols too
4225	Able to view the current values of the IO in an RTU currently running a DLP
4226	Parse the current DLP file for the number of I/O and set up the RTU accordingly
4234	All COSMASK is ON by default
4236	Seems to always load on application start-up
4237	Increase the number of timers to say 128
4238	The Watch Properties form should also allow ranges that don't start with 0. E.g. NAIN6..NAIN11
4241	Allow the user to edit the value on the grid itself
4244	A time stamp column to show when the watch value changed
4245	A custom display mode
4246	An IONum column in the Watch list so it can be sorted by I/O numbers
4247	Range check error when toggling digital outputs too fast
4249	Cannot change values in quick succession
4250	Right click a symbol and select Add Watch

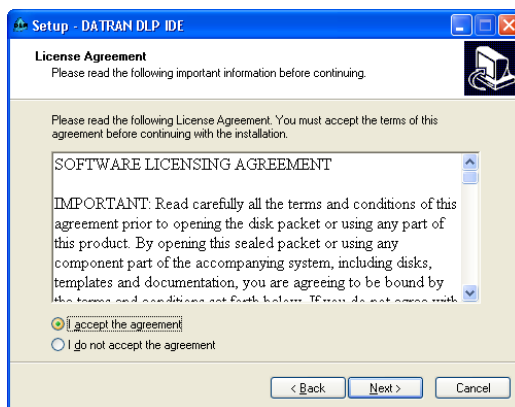
4251	DLP IDE Comments
4257	Timed out when ever reading RAIN values
4258	The GUI becomes unresponsive when a message time out happens
4259	Extract DLP from RTU functionality doesn't work anymore
4260	Remember the "Stay On Top" setting on Watch List and Hex Dump
4264	Adding multiple watch names is not intuitive
4268	DLP Coding Functions section not up to date
4269	Spare type variables are allowed to be added to watch list via right-click
4271	The symbol list box in watch properties dialogue should show icons
4272	Should be able to select multiple watch names from within the ASM file
4273	Able to save and open a watch list
4329	Left click a symbol and select Add Watch from Watch List pane came up with blank
4363	PDIG on expansion modules DLP IDE issue
4395	Please allow real analogue outputs (RAO) into the watch list

Installation Procedure

When the supplied CD is inserted into your CDROM drive it should automatically run the installation menu system. If you have CD Auto run turned off, then using File Explorer, you will need to navigate to the *MainMenu* folder on the CD and double click on *Autorun.exe*.

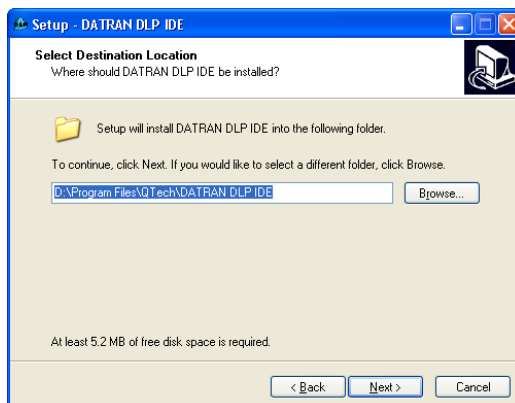


This is the Welcome screen, click **Next**.



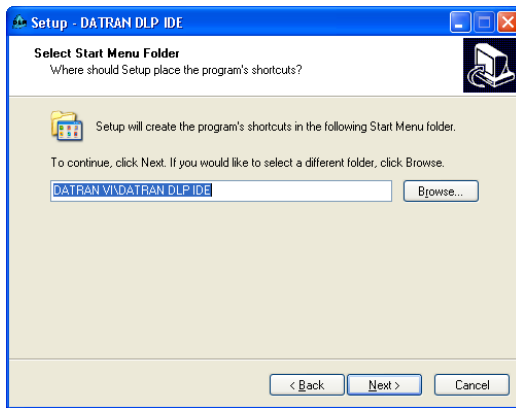
This is the software license screen. Please read all of the terms and conditions and if you agree click **I accept the agreement** and then click **Next**, otherwise click **Back**.

Pressing **Cancel** will exit the installation and leave the system unaffected and unchanged.



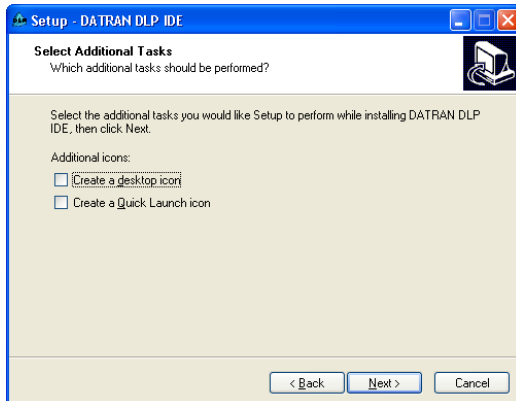
This is the location screen. Click **Next** to accept the default (recommended) location. If you wish to change the location click **Browse**.

Pressing **Cancel** will exit the installation and leave the system unaffected and unchanged.



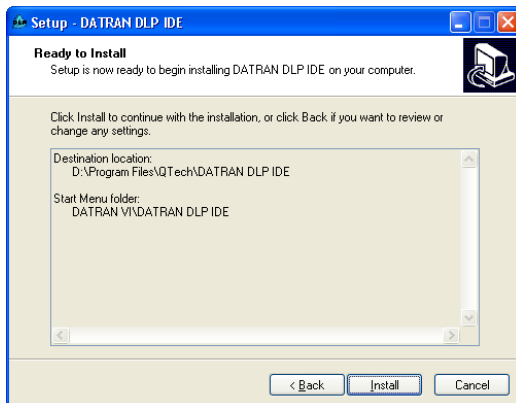
This is the start menu folder screen. To create a shortcut in the default location (recommended) click **Next**. If you wish to change the location click **Browse**.

Pressing **Cancel** will exit the installation and leave the system unaffected and unchanged.



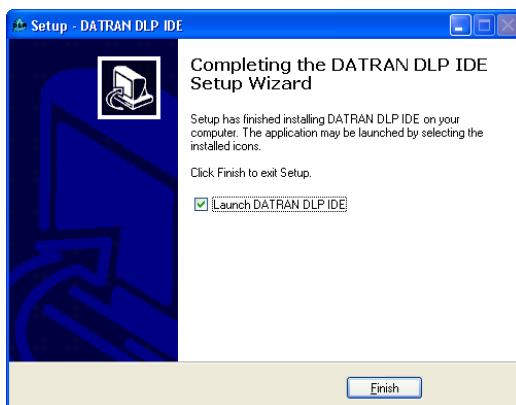
This is the additional task screen. To create these icons check the required box(s) and click **Next**.

Pressing **Cancel** will exit the installation and leave the system unaffected and unchanged.



This is the install screen. To start installation click **Next**.

Pressing **Cancel** will exit the installation and leave the system unaffected and unchanged.



This is the completion screen. For the installation to be complete click **Finish**.

The installation is now complete and DLP IDE can be launched.

Disclaimer

While every endeavour has been made to ensure that the product description is accurate, details are subject to change. QTech Data Systems Ltd reserves the right to alter the system specifications if required. It is our firm intention to continue to develop the features of the DATRAN VI product range and add additional modules.

QTech Data Systems Ltd does not warrant the suitability of this product for any particular application as the conditions in which it is used are beyond our control. This is not withstanding warranty of merchantability.

Increasingly, systems are being connected to the Internet. QTech Data Systems Ltd cannot guarantee these services as being available or functional 100% of the time, as the network connections are beyond our control.

Ongoing Support

QTech Data Systems Ltd encourages clients to configure their systems to allow remote access via a direct connect modem or internet based VPN. This allows for off-site support from either QTech Data Systems Ltd staff, or in-house staff outside of work hours.

A support services maintenance agreement is available (or users can upgrade from an existing maintenance agreement).

All support will be charged at \$100 +GST per hour plus disbursements.