



DATRAN™ VI

PRODUCT RELEASE NOTICE

DATRANVue

(Design and Runtime Applications)

RELEASE 3.02

March 2011

QTech Data Systems Ltd
Unit 6 Amuri Park
404 Barbadoes Street
Christchurch
New Zealand

Phone: +64 3 3663713
Fax: +64 3 3652815
E-mail: sales@qtech.co.nz
Web www.qtech.co.nz

© 2011 QTech Data Systems Ltd

DATRAN is a registered trademark of QTech Data Systems Ltd

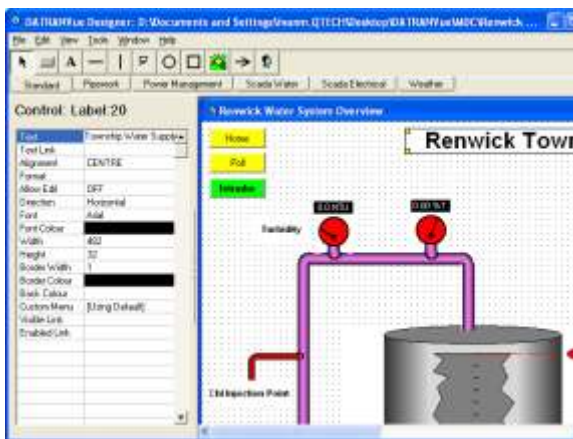
Table of Contents

Table of Contents	2
Introduction	3
Prerequisites for Upgrade	3
Summary of changes (Designer v1.9 to v3.0).....	3
Installation Procedure	3
Disclaimer	3
Ongoing Support.....	3

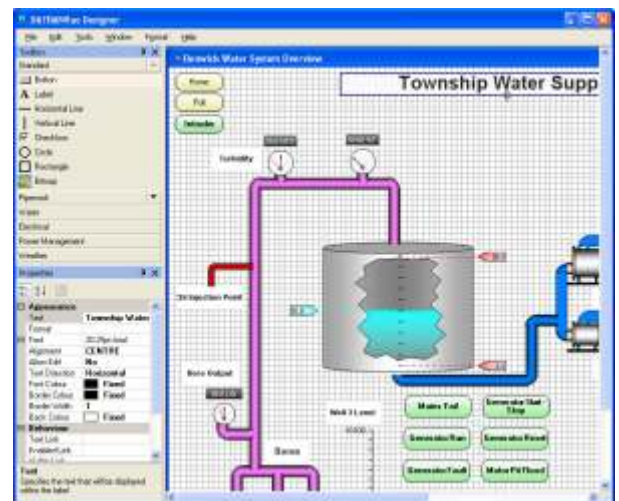
Introduction

QTech is delighted to launch the latest version of DATRANVue version 3.02. This update includes a number of exciting enhancements and brings Designer in line with the previously updated Runtime as follows:

- Microsoft's .NET technology.
DATRANVue has been completely re-written using .NET. This provides DATRANVue with greater stability with the latest Operating Systems and is a lot faster.
As part of product testing, QTech uses a highly complex test DATRANVue form that used to take over 30 seconds to load using Designer v1.9.4. It now takes only 2 seconds!
- Vector Graphics Library
The Designer now uses the same vector graphics library as the current release of the Runtime. This means that the screen you design looks exactly the same as the screen your end users will see.
- User Interface Improvements



Version 1.9



Version 3.02

DATRANVue Runtime v3.0.2 is also included in this release. This version is needed for compatibility with the v3 designer but has no functional changes.

This release comes with a user friendly Setup Wizard to help simplify installation and will upgrade any existing version of DATRANVue Designer and Runtime.

QTech strongly recommends that all users of DATRANVue upgrade to version 3.0.2.

The following sections of this document describe the enhancements and the installation procedure.

Your feedback on the product and possible future enhancements is always appreciated. Please contact QTech on +64 3 366 3713, or email to techsupport@qtech.co.nz.

Prerequisites for Upgrade

This version replaces all previous versions of DATRANVue Designer and Runtime.

- **Backward Compatibility**

DATRANVue Designer and Runtime are backward compatible with your existing HMI screens created with DATRANVue Designer v1.x.

Note: Once a form has been modified in any way with Designer v3 it can only be run by v3 of the Runtime. v3 of the Runtime is, however, capable of running forms created using older versions of the Designer.

It is recommended that your Runtime installations are upgraded prior to modifying any of your forms with the v3 Designer. Runtime v3.0.2 is contained on the provided installer.

- **Deprecated Controls**

None.

- **Software Licensing**

DATRANVue Runtime is now fully licensed via the concurrent user licensing model as managed by DATRAN TCP Server. No additional licensing is required.

- **Close Applications**

Before installing it is recommended that you close all applications running on the target machine.

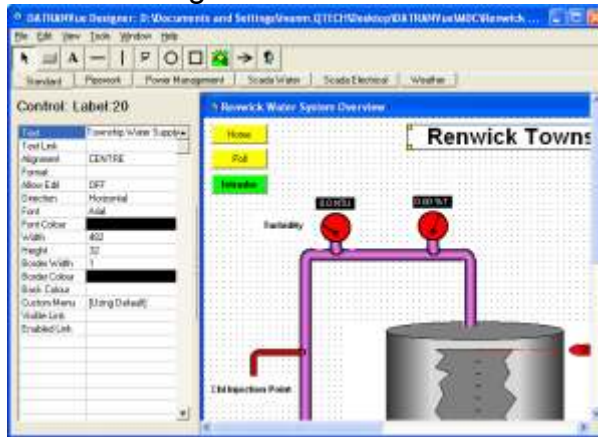
- **PC Reboot**

No rebooting of the target machine is required after the installation.

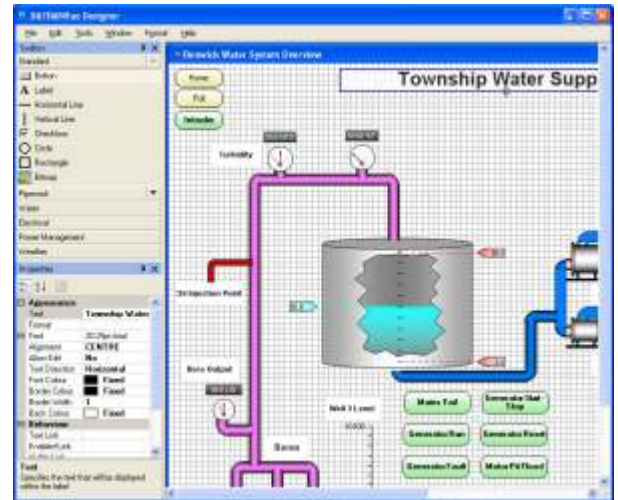
Summary of changes (Designer v1.9 to v3.0)

- **User Interface Overhaul**

The user interface has been dramatically improved, enhancing and simplifying form design.



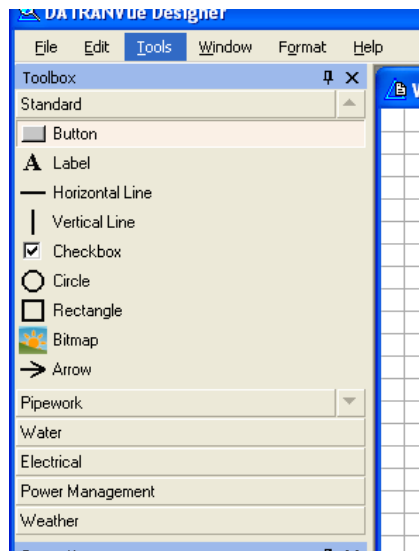
Version 1.9



Version 3.02

- **Toolbox**

The Toolbox now defaults to residing on the left hand side of the screen. It can however be dragged to be either be floating or docking on the right hand side.



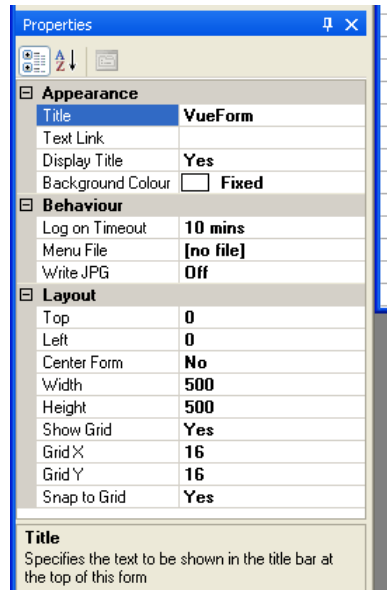
Clicking on the Toolbox control set heading will display the controls within that control set. Use the up and down arrows to scroll through the controls if they do not all fit on the screen at once.

Clicking on the pin icon will allow the Toolbox to slide neatly away at the side of the screen and providing more screen space to design your form.

Controls are now dragged and dropped on to your form.

- **Properties Window**

The properties window resides underneath the Toolbox window and has the same docking features as mentioned above.



Properties are now grouped to make them easier to find. However, if desired you can press the A-Z button to get them to list alphabetically.

Click on a property to change its value. Some properties, e.g. colour will display a [...] button when selected. If you click on this an associated window will be displayed. Some properties e.g. Font have a [+] next to them. If you click on this it will expand that property to its component parts e.g. Font Name, Font Size etc.

At the bottom of the Properties window quick help is provided showing a one-liner for the property currently selected.

- **Form Grid**

The Grid on the Designer form is now easier to see and use. Note that this is not displayed in the Runtime viewer, it is a tool to help with screen design.

On the form's properties the following options are available:

Show Grid - turns the grid lines on or off.

Snap to Grid - if turned on controls dropped on the form will align themselves to the grid.

Grid X and **Grid Y** specify the size of the grid. For aligning Pipework and the Water controls a grid size of 8 is good. Note that multiples of 2 work better than odd numbers such as 5.

- **Windows 7 - 64 bit Compatibility**

This release of DATRANVue has been tested using a non-administrator account on a Windows 7 - 64 bit operating system.

However, an administrator account is required for the installation and the licensing of the product.

DATRANVue is still a 32 bit application and therefore on first run you may see a dialog box saying that Windows will run this application in compatibility mode. This is just Windows recognising that it needs to run DATRANVue as a 32 bit application.

Installation Procedure

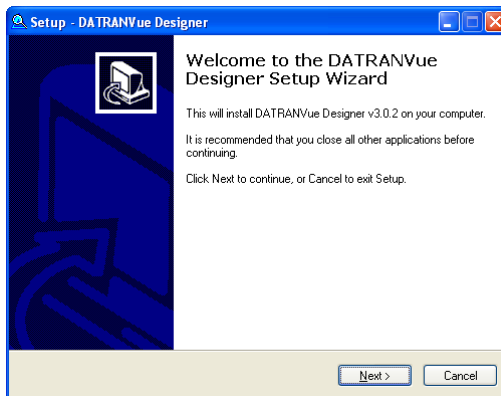
When the supplied CD is inserted into your CDROM drive it should automatically run the installation menu system. If you have CD Autorun turned off, then using File Explorer, you will need to navigate to the *MainMenu* folder on the CD and double click on *Autorun.exe*.

Note that there are two installation programs one for the Designer and one for the Runtime. If you install the Designer it will automatically also install the Runtime for that machine at the same time.

Important upgrading notice:

It is recommended that you upgrade your operator's PCs and control rooms to the latest version of the Runtime before installing the new version of Designer on your network.

The latest version of the Runtime is backward compatible. However, if you modify a form with the latest version of the Designer then that form will no longer work correctly on older versions of the Runtime. Therefore by upgrading all Runtimes beforehand mitigates this issue.

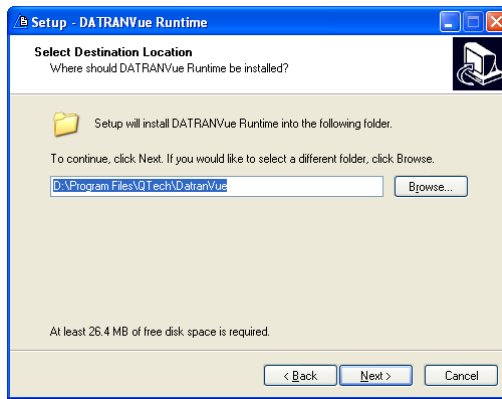


This is the Welcome screen, click **Next**.



This is the software license screen. Please read all of the terms and conditions and if you agree click **I accept the agreement** and then click **Next**, otherwise click **Back**.

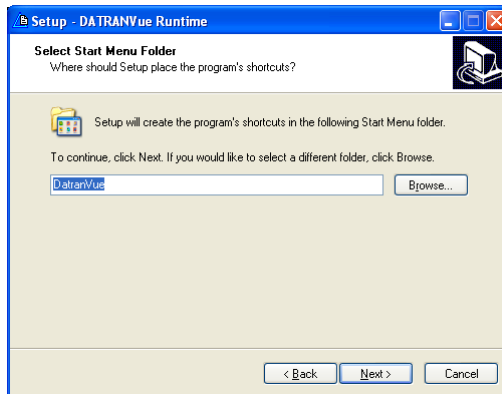
Pressing **Cancel** will exit the installation and leave the system unaffected and unchanged.



This is the location screen. Click **Next** to accept the default (recommended) location.

If you wish to change the location click **Browse**.

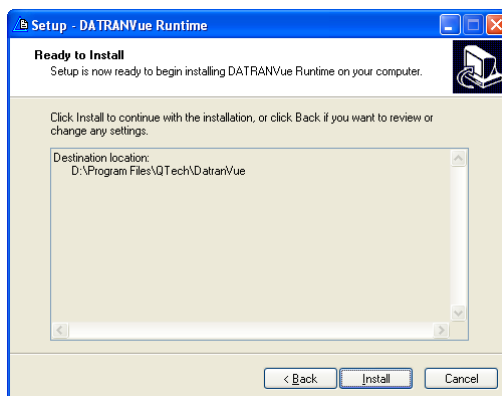
Pressing **Cancel** will exit the installation and leave the system unaffected and unchanged.



This is the start menu folder screen. To create a shortcut in the default location (recommended) click **Next**.

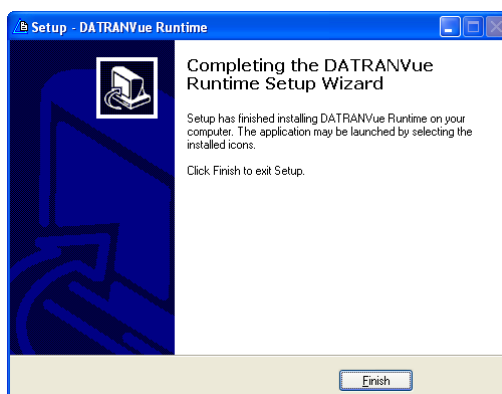
If you wish to change the location click **Browse**.

Pressing **Cancel** will exit the installation and leave the system unaffected and unchanged.



This is the install screen. To start installation click **Next**.

Pressing **Cancel** will exit the installation and leave the system unaffected and unchanged.



This is the completion screen. For the installation to be complete click **Finish**.

The installation is now complete. To launch DATRANVue Runtime, double click on one of your DATRANVue Designer created HMI screens (these files have a .QML file extension).

Disclaimer

While every endeavour has been made to ensure that the product description is accurate, details are subject to change. QTech Data Systems Ltd reserves the right to alter the system specifications if required. It is our firm intention to continue to develop the features of the DATRAN VI product range and add additional modules.

QTech Data Systems Ltd does not warrant the suitability of this product for any particular application as the conditions in which it is used are beyond our control. This is not withstanding warranty of merchantability.

Increasingly, systems are being connected to the Internet. QTech Data Systems Ltd cannot guarantee these services as being available or functional 100% of the time, as the network connections are beyond our control.

Ongoing Support

QTech Data Systems Ltd encourages clients to configure their systems to allow remote access via a direct connect modem or internet based VPN. This allows for off-site support from either QTech Data Systems Ltd staff, or in-house staff outside of work hours.

A support services maintenance agreement is available (or users can upgrade from an existing maintenance agreement).

All support will be charged at \$100 +GST per hour plus disbursements.