

PRODUCT RELEASE NOTICE

DATRAN VI RELEASE 6.66

April 2010

**Microsoft Windows 7 / Vista / XP /
Server 2003 + 2008 Based Telemetry &
SCADA Application**

Table of Contents

Table of Contents.....	2
Introduction.....	3
The benefits of upgrading	3
This Release.....	4
Prerequisites for Upgrade.....	4
Summary of New Features.....	4
Components Removed.....	6
Summary of Issues Resolved	7
Disclaimer.....	10
Ongoing Support.....	10

Introduction

DATRAN VI version 6.66 is now available to new and existing users of DATRAN VI.

This version is an exciting and significant upgrade with many new features and enhancements.

DATRAN Supervisor, v2.36 and Trending v4.50 are also included on the CD. These need to be installed on all users' machines to take advantage of the new features. This needs to be considered and planned for during the upgrade process.

A Getting Started Guide is also provided to step you through the installation and help ensure a seamless introduction of the upgrade.

Your feedback on the product and possible future enhancements is appreciated, so please do not hesitate to contact QTech on +64 3 366 3713, or email it to techsupport@qtech.co.nz.

The benefits of upgrading

Software and hardware is continually (and rapidly) evolving. Many of our customers have been using DATRAN for over 20 years, and it has remained a stable product on a variety of platforms, from the early DOS days, all the way to Windows Server 2008. DATRAN VI is a major evolution of our early products and we feel that it combines the best of the features from all these products, along with a quality control program used to manage its development and release that is essential for software being used in the roles that DATRAN is used.

We believe that the advantages of the Microsoft Windows platform, along with the strengths of DATRAN VI, have proven to be a solid, reliable combination for small to mid range SCADA / Telemetry systems.

For all DATRAN VI users with a SMA this upgrade is delivered free of charge on CD.

We strongly recommend that all systems are updated to the current release, and suggest to DATRAN VI users without Software Maintenance Agreements (SMA) that they consider this significant upgrade, as this release will be where QTech is able to focus its direct support.

The DATRAN team

This Release

The following sections detail the new features and user requested enhancements in this version of DATRAN VI. We have also resolved many requested tweaks and bug fixes.

Prerequisites for Upgrade

Prior to upgrading to DATRAN VI v6.66 from any previous version there are a number of points to note and consider.

Some earlier and existing DATRAN VI applications and connectivity modules are no longer supported in DATRAN VI v6.66. This means that DATRAN VI may need to be reconfigured to use the replacement modules prior to or as part of the upgrade process.

If your current installation is older than v6.52, please contact us.

Summary of New Features

- **Email Service**

The Email Service provides connectivity with your Email server. It replaces the Email functionality of the Paging Service and offers the following additional features:

- Send Emails to Operator Groups
- Add Operators or Groups to the CC field of an Email
- Add Operators or Groups to the BCC field of an Email
- Specify and send Attachments

- **InSQL Database Connectivity**

The InSQL Database Connectivity Module (InSqlCM) allows connectivity to any Wonderware IndustrialSQL (InSQL) Server database that provides an OLE-DB for MS Windows interface. It features:

- Internal Log Recovery file generation.
This is generated when the database is inaccessible. Should the InSQL database be unavailable when DATRAN VI needs to log data, InSqlCM will automatically log an error and write out all following SQL statements to a disk file
- Advanced Diagnostics and Error Reporting.
The InSqlCM service is efficient at checking the database connectivity and reporting a lost connection. With the internal recovery file-logging functionality there is no longer the need to have a script in DATRAN VI to watch for a broken connection and begin the recovery process. Any SQL errors are automatically logged to a user specified directory and will report any SQL syntax or connection errors.

The InSqlCM service introduces the following DATRAN objects:

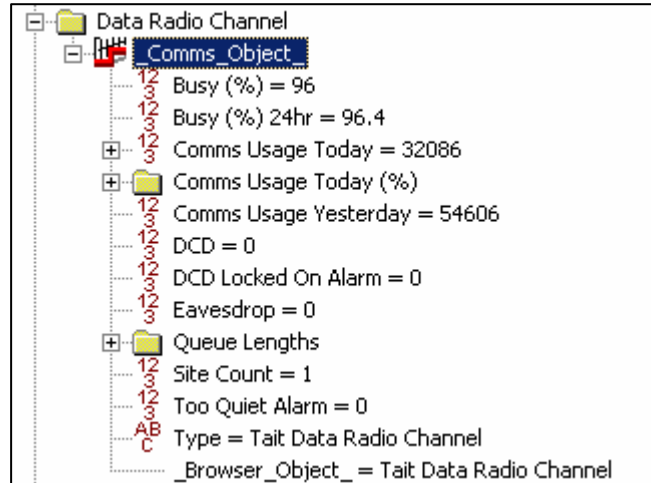
[InSqlCM Database](#) defines how to connect to the InSQL database.

[InSQL Log Analogue](#) logs the selected analogue value to the InSQL database either periodically or when the value changes.

[InSQL Log Digital](#) logs the selected digital value to the InSQL database when the value changes.

- **Tait Data Radio Channels**

More and more customers are making use of Tait digital radios in place of older analogue radios. In order to streamline the configuration of these radios, a specific channel type has been created which will set up the most common default parameters. In addition, the performance of this channel has been tweaked with the behaviour of data radios in mind, including active queue management and improved timing to reduce wasted bandwidth.



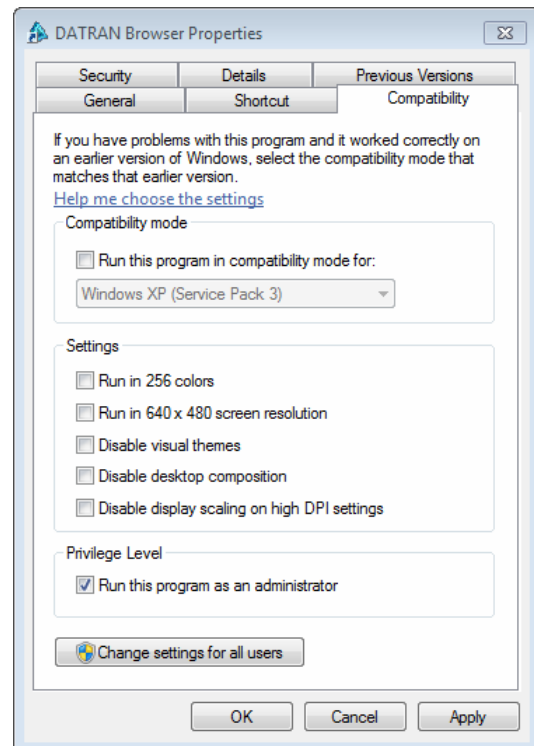
- **Blank Database Installer**

If you are installing DATRAN VI for the first time and you don't have an existing database manager on your system, there is a quick and easy way to get started. Included on the CD is an installer which will set up both Microsoft SQL Server Express and the Management Studio.

It will then copy a blank database onto your machine, ready to be used with the logging components of DATRAN VI without any further configuration.

- **Windows 7 support**

DATRAN VI has now been confirmed to run on Microsoft Windows 7. It is necessary to run DATRAN Browser and the Start / Stop services functions as an administrator. This can be done either by logging on as a user with administrative rights, or else by editing the properties of the shortcuts in the Start Menu. The picture to the right shows the properties menu and the "Run this program as an administrator" button which needs to be checked.



Components Removed

This version of DATRAN VI has not made any components obsolete.

However, DATRAN Supervisor v1.80 and earlier will not work and need to be upgraded to v2.36 on the install CD.

This can be found under the *Browse Additional Software* tab on the main menu of the installer. Please refer to the getting started guide for further details.

Summary of Issues Resolved

The following issues have been resolved since DATRAN VI v6.64

QTech Id	Category	Summary
4148	ADO	HDI can now pick up the right settings from ADO.
4288	ADO	ADO no longer asks the user to configure properties that it can supply itself.
4275	ADO	TCP Server is no longer constantly being notified of connection status that hasn't changed.
4147	ADO	_Log_Analogue_ has an interval and offset, not just an interval, giving more flexibility and control.
4212	ADO	Set up "Windows Authentication" as a default login for the database, if none exists.
4118	ADO	Scaling now works more intuitively.
4050	ADO	Security view now has the correct data for "yesterday" on the first day of the month.
4038	ADO	SQL scripts for generating security data have been updated.
4045	Alarm Service	SMS Message annunciator count property is now correct, which stops Alarm Service from hogging the TCP channel.
4138	Alarm Service	Used to crash when an alarm did not have a required property.
4183	Alarm Service	Supervisor now correctly logs the first point notes added into DATRAN database.
4062	Comms	Fixed occasional loss of connection to RTU on Cellular Data Channel.
4083	Comms	More contrast for TX and RX diagnostic colours.
4090	Comms	Fixed occasional crash when using multiple dialup RTUs on a single flaky channel.
4137	Comms	Support for returning cellular signal strength (RSSI) within a Variable Status Poll (for RTUs with v5.20+ firmware).
4041	Comms	Added property to control how long to wait for RTU address confirmation on Cellular Data Channels.
4014	Comms	Send a "connection refused" reply to an invalid cellular RTU so it isn't waiting forever for a packet.
4010	Comms	Default retry times for Cellular Data Channel are now long enough for the modem to wake up and transmit.
4115	Comms	Interchar timeout messages now appear as a CommsErr message when this happens, thus aiding problem diagnosis.
3875	Comms	Some missing Comms Diagnostic messages now showing up properly.
4180	Comms	Cell Channel inactivity timeout now has a sensible default which will reduce reconnect fees.
4190	Comms	TCP threads now have a watchdog to prevent trying to access dead ones.
4274	Comms	TCP Server is no longer being notified of communication statistics that haven't changed.
4265	Comms	Var Status Polls are now distributed evenly over the

		poll interval instead of all firing at once.
4255	Comms	Skipping background polls due to recent changes of state has become more intelligent.
2899	Comms	Q03 firmware version is now reported under Var Status Polls right back to v4.36.
4140	Comms	Outputs returned in a PUP response can now be ignored if required, using the "PUP Writes Outputs" property.
4011	Comms	Cellular Data Channel dialogue box has been tidied up to remove redundant information and add polling controls.
3730	Comms	Source/Destination Addressing and routed datagrams are now compatible.
4105	Comms	Eavesdrop specified for individual RTUs no longer affects the whole channel.
4030	Comms	Channel Timeset Interval no longer creates a Poll Interval property.
4282	DATRAN Browser	Services can be started from inside Browser even when the TBD file is in Read Only mode (in order to get out of Read Only mode).
3353	DATRAN Browser	The Columns node under an <code>_Annunciator_</code> is now grey, not yellow.
4189	DATRAN Browser	It is no longer possible to get 100% CPU usage in offline mode if your error log is large and constantly being opened and closed.
4150	DATRAN Browser	Request Start and Request Stop are now available in the new <code>_Comms_Hist_Data_</code> dialogue.
3985	DATRAN Browser	Operator dialogue Remote Password property is now an encrypted type.
4289	DATRAN Browser	Restarting DATRAN services via Browser now works properly instead of just stopping them.
3954	DATRAN Browser	Users are now prohibited from stopping services if they do not have the Browser password.
4117	DATRAN Browser	The Operating System now appears underneath the computer node, like the HDD Serial Number.
3982	DATRAN Browser	Memory and CPU usage no longer grow out of control when you have diagnostics messages spread over multiple lines.
4119	DATRAN Browser	Scaling works properly in the HDI configuration dialogue.
3921	DATRAN Database	log analog not working when Units parameter is a NULL type
3683	DATRAN Diagnostics	Datagrams now give an indication of the total number of segments in diagnostics, instead of just the current segment number.
3990	DATRAN Help	There is now online help for the IIF statement.
4012	DATRAN Help	Added a how to section on setting up Cellular Data Channel RTUs.
4169	DVG	Correct values are now returned when the Max function is used on a Pipe that uses timestart.
4168	DVG	New TimeConvertToSystem function allows conversion from local time to system time.

4035	Historical Data	The automatic conversion from old Scale formulae to new dialogue controls now recognises more formats.
4122	Historical Data	Analogue values can now be passed through formulae before logging to database.
4149	Historical Data	HDI can now recognise databases with non-default names.
4211	Historical Data	If ADO is not installed, HDI will no longer create SQL recovery files.
4191	Historical Data	InSQLCM diagnostics now have their own category.
4213	Historical Data	Removed occasional duplication in the data logged to InSQL database.
4043	Installer	Now opens an exception in the Windows firewall for OPC Client Interface.
4285	Installer	Now opens an exception in the Windows firewall for QTech Comms.
3980	Installer	DATRAN Client now uninstalls cleanly.
4256	OPC	Improved write performance to handle more than one write per second.
3194	OPC	Now able to request topic lists containing over 121 topics.
4029	OPC	Improved code efficiency around SetDataAddress.
4182	Server Manager	Now allows larger diagnostic files.
4277	TCP Server	TCP Server is no longer constantly broadcasting annunciator count changes that are unimportant.
4131	TCP Server	Supervisor can now get the properties of an alarm annunciation.
4174	TCP Server	No longer crashes when a connection has been killed during shutdown.
4124	Treebase DLL	No longer crashes when asked to compare a NULL node.
4143	Treebase Server	Services now default to "Restart the Service" on failure, instead of "Take no action".
4278	XDI - SMS Service	TCP Server is no longer constantly being notified of connection status that hasn't changed.
4201	XDI - SMS Service	No longer crashing when TBServ is not informed about thread startup / shutdown.

Disclaimer

While every endeavour has been made to ensure that the product description is accurate, details are subject to change. QTech Data Systems Ltd reserves the right to alter the system specifications if required. It is our firm intention to continue to develop the features of the DATRAN VI product range and add additional modules.

QTech Data Systems Ltd does not warrant the suitability of this product for any particular application as the conditions in which it is used are beyond our control. This is not withstanding warranty of merchantability.

Increasingly, systems are being connected to the Internet. QTech Data Systems Ltd cannot guarantee these services as being available or functional 100% of the time, as the network connections are beyond our control.

Ongoing Support

QTech Data Systems Ltd encourages clients to configure their systems to allow remote access via a directly connected modem or internet based VPN. This allows for off-site support from either QTech Data Systems Ltd staff, or in-house staff outside of work hours.

A support services maintenance agreement is available (or users can upgrade from an existing maintenance agreement).

All support will be charged at \$100 +GST per hour plus disbursements.

DATRAN is a registered trademark of QTech Data Systems Ltd