



DATRAN™ VI

PRODUCT RELEASE NOTICE

DATRAN VI RELEASE 6.66.2

March 2011

**Microsoft Windows 7 / Vista / XP /
Server 2003 & 2008 Based
Telemetry & SCADA Application**

QTech Data Systems Ltd
Unit 6 Amuri Park
404 Barbadoes Street
Christchurch
New Zealand

Phone: +64 3 3663713
Fax: +64 3 3652815
E-mail: sales@qtech.co.nz
Web: www.qtech.co.nz

© 2011 QTech Data Systems Ltd

Issue 1

DATRAN is a registered trademark of QTech Data Systems Ltd

Table of Contents

Table of Contents.....	2
Introduction	3
The Benefits Of Upgrading	3
This Release.....	4
Prerequisites for Upgrade	4
Summary of New Features	5
Components Removed.....	7
Summary of Issues Resolved.....	8
Disclaimer.....	11
Ongoing Support.....	11

Introduction

DATRAN VI version 6.66.2 is now available to new and existing users of DATRAN VI.

This version is an exciting and significant upgrade with many new features and enhancements.

DATRAN Supervisor v3.10 and Trending v4.50 are also included on the CD.

These need to be installed on all users' machines to take advantage of the new features.

This needs to be considered and planned for during the upgrade process.

A Getting Started Guide is also provided to step you through the installation and help ensure a seamless introduction of the upgrade.

Your feedback on the product and possible future enhancements is appreciated, so please do not hesitate to contact QTech on +64 3 366 3713, or email it to techsupport@qtech.co.nz.

The Benefits of Upgrading

Software and hardware is continually and rapidly evolving. Many of our customers have been using DATRAN for over 20 years, and it has remained a stable product on a variety of platforms, from the early DOS days, to the current Windows Operating Systems.

DATRAN VI is a major evolution of our early products and we feel that it combines the best of the features from all these products, along with a quality control program used to manage its development and release that is essential for software being used in the roles that DATRAN is used.

For all DATRAN VI users with a SMA this upgrade is delivered free of charge on CD.

We strongly recommend that all systems are updated to the current release, and suggest to DATRAN VI users without Software Maintenance Agreements (SMA) that they consider this significant upgrade, as this release will be where QTech is able to focus its direct support.

Thank you all for your continued support and commitment to DATRAN.

The DATRAN team

This Release

The following sections detail the new features and user requested enhancements in this version of DATRAN VI. We have also resolved many requested tweaks and bug fixes. Please keep these improvement suggestions coming.

Prerequisites for Upgrade

Prior to upgrading to DATRAN VI v6.66.2 from any previous version there are a number of points to note and consider.

Some earlier and existing DATRAN VI applications and connectivity modules are no longer supported in DATRAN VI v6.66. This means that DATRAN VI may need to be reconfigured to use the replacement modules prior to or as part of the upgrade process.

If your current installation is older than v6.52, please contact us.

Summary of New Features

- **XDI to use SMS Direct modem if Datashed is down**

SMS Direct is the existing cellular modem based backup system that ensures that SMS messages go to operators, even when the internet or the Datashed SMS gateway, is not available.

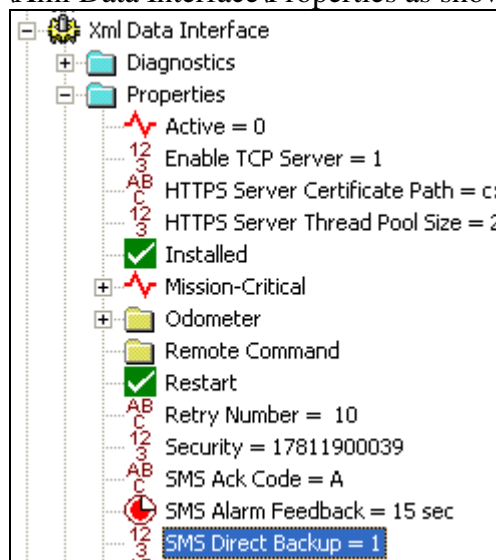
This new feature dramatically simplifies the implementation of SMS Direct messages and helps prevent unnecessary delays in the alarm escalation sequences.

Previously the SMS Direct Alarm would be triggered at the end of the escalation sequence. This may have taken some time to trigger depending on all of the wait states in the escalation sequence.

Now, if XDI can't complete the SMS Message annunciator, it communicates directly with SMS Direct to send the SMS via the cellular modem to the same operator as the original SMS Message would have gone to.

The advantage is that all of the SMS Direct messages get sent to the configured operators in a timely fashion and with no additional configuration.

To enable this feature, set the "SMS Direct Backup" flag to 1 in \<Computer Name>\Xml Data Interface\Properties as shown below and restart XDI.



Other aspects of the existing alarm escalations should also be tidied up to reflect this new feature, i.e. removal of unnecessary blocks of SMS Direct steps.

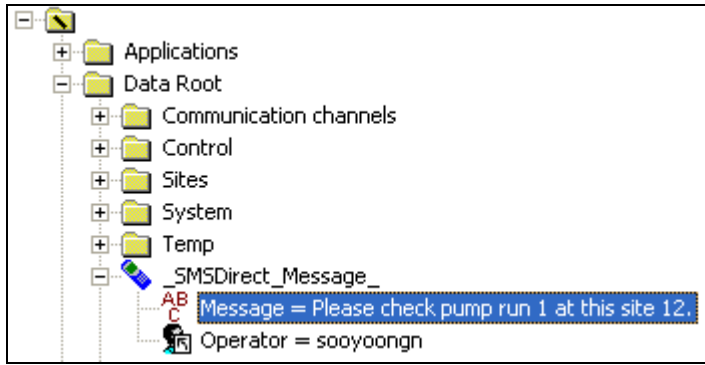
Please remember that when SMS Direct is in use internet tracking and alarm acknowledgement is not available. The operators will also receive messages from a different sender to the usual Datashed.

Please contact us if you would like QTech to perform this activity for you.

- **Use _SMSDirect_Message_ when Datashed is down**

The SMS Direct service now provides the ability to send one off text messages where there is a problem for XDI to connect to Datashed.

This is intended to simplify the task of getting important messages to operators when the internet/Datashed is unavailable, in essence providing the same direct messaging ability as if you are using Datashed.



- Historical Data Interface (HDI) – Large packet downloads**

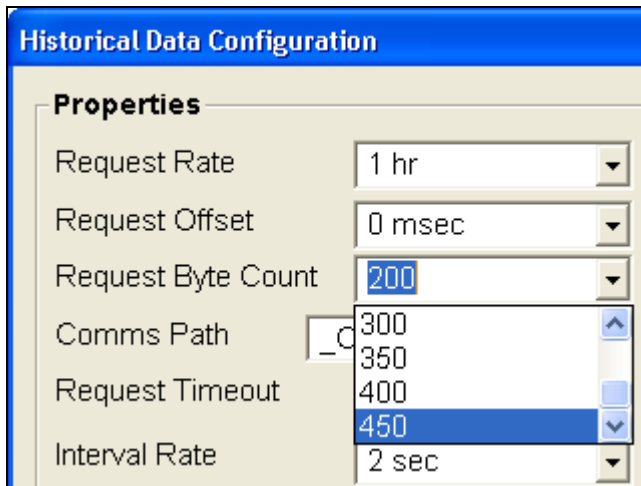
HDI is responsible for implementing “RTU Data Logging”, which is crucial for time stamped data logging for DWS compliance etc.

Many DATRAN users now use high speed digital and data communications.

We have now increased the amount of data that can be downloaded from the RTU when you are using high speed comms.

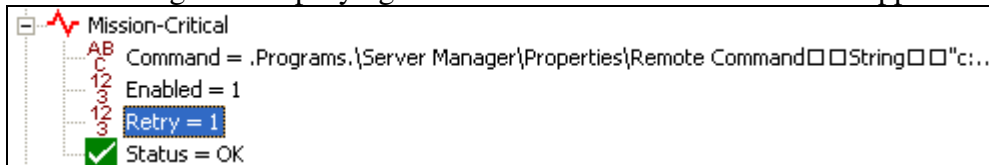
Previously downloads were limited to 200 bytes, but you can now configure DATRAN to request data in packets up to 450 bytes in size.

This can reduce the total number of packets required and thus can provide significant overall download speed increases. See the “How To” in DATRAN Help for more information.



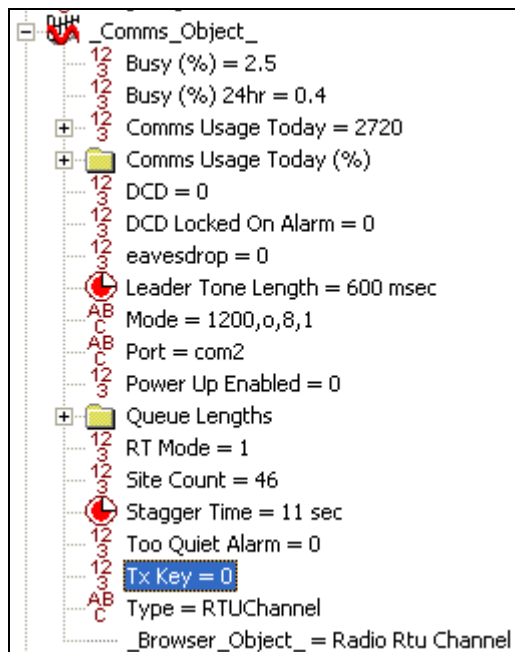
- Allow Server Manager to keep trying to revive a crashed DATRAN service**

Add a “Retry = 1” underneath your DATRAN service Mission-Critical node to tell Server Manager to keep trying to revive a DATRAN service that stopped running.



- A node in the Net Comms Object to indicate Tx keyed**

A “Tx Key” node has been added to provide an indication which bytes are being transmitted on the channel _Comms_Object_.



Components Removed

This version of DATRAN VI has not made any components obsolete.

However, DATRAN Supervisor v1.80 and earlier will not work and need to be upgraded to v3.00 or higher. The latest version of Supervisor is provided on the installation CD.

This can be found under the *Browse Additional Software* tab on the main menu of the installer. Please refer to the getting started guide for further details.

Summary of Issues Resolved

The following issues have been resolved since the base version of DATRAN VI v6.66.1

QTech Id	Category	Summary
4498	ADO	A list of Supervisors that have ever connected to TCP Server
4500	ADO	Added Database Path entry in the ADO Databases dialogue
4501	ADO	Unable to auto create DATRAN database when it has been tried the first time
4503	ADO	DATRAN VI got errors while auto-creating DATRAN database with new MS SQL Server 2008 engine
4539	ADO	Max and Min scale is wrong at 0
4594	ADO	Unable to start SQL Server Express
4607	ADO	_Log_Digital_ cannot handle ECAN Logger address in hex format
4487	Alarm Service	Notes Available node is not set to 1 the very first time notes are assigned to a point
3518	Comms	The base station should automatically update the RTU RTC on PUP
4402	Comms	Time In Comms Fail (%) is wrong when there is only 1 communications fail in the last 7 days
4412	Comms	Fixed status polls happening even when Use System Polls set to False
4421	Comms	QTech Comms Rx diagnostics should be a darker shade of green
4462	Comms	Phone Number Packet over-writing RTU Data logging response
4484	Comms	Tait Data Radio Channel Too Quiet Alarm not working
4509	Comms	Adding a new TCP RTU stops all the existing TCP RTUs on the same channel from working
4519	Comms	Allow DATRAN QTech Comms to log straight into DATRAN database
4522	Comms	Crashed while running a specific DC TBD file
4553	Comms	Auto HDI data download on Poll not always desirable
4588	Comms	Have a node in the Net Comms Object to indicate Tx keyed
4612	Comms	ECAN Logger does not provide flow rate data
4420	DATRAN Browser	Error Querying Service Mgr
4425	DATRAN Browser	Set Password option not in the list of Type Pattern combo box list
4502	DATRAN Browser	Unable to export diagnostics to RTF
4554	Historical Data Logging	Let user turn off "force polls automatically trigger data logging requests" feature
4604	Historical Data Logging	It would be good to use larger packets for historical data uploading
4605	Historical Data Logging	DATRAN database error description was overwriting ADODCM's one

4505	Installer	DDE Server Interface doesn't work in Windows 7 unless run in console mode
4396	OPC I/O Driver Server	OPC clients will still report the quality as good when it is actually bad
4409	OPC I/O Driver Server	Make OPC server cope with high polling/collection intervals
4423	Power Management	Injector Failure logging causing Primary Key violation
4454	Server Manager	Allow Server Manager to try reviving a dead DATRAN service again
4400	SMS Direct	Add a <u>_SMS_Direct_Message_</u> just like <u>_SMS_Message_</u>
4411	TCP Server	TCP Server became unresponsive and cannot be restarted by Server Manager
4495	TCP Server	Remote Table Manager Annunciators not being present in default TBD file
4427	Tree Base DLL	Lookup method does not correctly return value in password type property node
4481	XDI - SMS Service	XDI to use SMS Modem if Datashed down
4512	XDI - SMS Service	Not much help to troubleshoot "The certificate authority is invalid or incorrect" error

The following issues have been resolved since the initial version of DATRAN VI v6.66.0

QTech Id	Category	Summary
4370	ADO	Automatically create <u>_Log_Analogue_</u> on the same level as <u>_Log_node</u>
4354	ADO	Newly created <u>_Log_Analogue_</u> should pick up default parameters from <u>..._Log_Alarm_</u>
4379	ADO	Newly created <u>_Log_Analogue_</u> should pick up default parameters from <u>_Formula_</u> or <u>_Copy_To_</u>
4381	ADO	Couldn't handle operator names with apostrophe in them
4349	Comms	Added ComsFailLast2Hours and ComsFailLast24Hours statistics
4341	Comms	Fixed Comms Usage Today (%) always zero
4332	Comms	Default Leader Bytes now 2 for TCP Channels or RTUs with old firmware will not work
4320	Comms	Fixed CPU high after upgrading to 6.66.0
4348	Comms	Fixed Comms Usage Today (%) above 100%
4047	Comms	Added %Comms Error Statistics
4340	Comms	Fixed Dialup no longer working with iPort as base station modem
4344	Comms	Fixed Dial-up comms sometimes getting stuck in a state where it just keeps dialling out from the base
4355	Comms	Reduced Inter-character timeout errors
4311	Comms	Fixed CPU high after renaming computer node
4350	Comms	Fixed issue causing a channel to stop working
4297	Comms	Fixed CPU 100% if virtual com port device removed
4322	Alarm Service	Fixed CPU high after changing annunciator to 60,000 entries and 60 days

4315	Alarm Service	Fixed potential crash after upgrading to 6.66.0
4337	Scripting	Fixed number of starts of a pump in the last 2 hours
4307	SMS	Added support required for Maxon Intermax
4326	OPC	Now required minimum of configuration
4362	OPC	Fixed possible memory leaks
4328	OPC	Fixed lost communication with XDI
4316	OPC	Fixed: quality of OPC items should go into BAD when disconnected from XDI - XML Service
4333	Help	Added help on how to connect DATRANVue to DATRAN TCP Server
4347	Help	Added help on Use Adaptive Polling property
4346	RTU Console	Created two nodes: one showing fault status and the other showing the fault message

Disclaimer

While every endeavour has been made to ensure that the product description is accurate, details are subject to change. QTech Data Systems Ltd reserves the right to alter the system specifications if required. It is our firm intention to continue to develop the features of the DATRAN VI product range and add additional modules.

QTech Data Systems Ltd does not warrant the suitability of this product for any particular application as the conditions in which it is used are beyond our control. This is not withstanding warranty of merchantability.

Increasingly, systems are being connected to the Internet. QTech Data Systems Ltd cannot guarantee these services as being available or functional 100% of the time, as the network connections is beyond our control.

Ongoing Support

QTech Data Systems Ltd encourages clients to configure their systems to allow remote access via a directly connected modem or internet based VPN. This allows for off-site support from either QTech Data Systems Ltd staff, or in-house staff outside of work hours.

A support services maintenance agreement is available (or users can upgrade from an existing maintenance agreement).

All support will be charged at \$100 +GST per hour plus disbursements.

DATRAN is a registered trademark of QTech Data Systems Ltd