



DATRAN™ VI

PRODUCT RELEASE NOTICE

DATRAN Trending RELEASE 5.00

August 2011

QTech Data Systems Ltd
12 Midas Place
Middleton
Christchurch
New Zealand

Phone: +64 3 3663713
Fax: +64 3 3652815
E-mail: sales@qtech.co.nz
Web: www.qtech.co.nz

© 2011 QTech Data Systems Ltd

DATRAN is a registered trademark of QTech Data Systems Ltd

Table of Contents

Table of Contents.....	2
Introduction	3
Prerequisites for Upgrade	4
Summary of New Features	5
Installation Procedure	9
Summary of Issues Resolved.....	11
Known Issues Not Resolved.....	12
Disclaimer.....	13
On-going Support	13

Introduction

DATRAN Trending version 5.00 is now available.

DATRAN Trending version 5.00 is a significant and major release which includes all of the fixes and enhancements since the last major release of DATRAN Trending, version 4.50 in February 2010.

The upgrade comes with a user friendly Setup Wizard to help simplify installation. Please forward a copy of this document to your IT/IS provider.

QTech strongly recommend that all systems are updated to this current release.

The following sections of this document describe the installation procedure and all of the enhancements and fixes.

Your feedback on the product and possible future enhancements is always appreciated. Please contact QTech on +64 3 366 3713, or email to techsupport@qtech.co.nz.

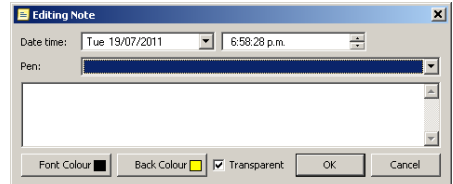
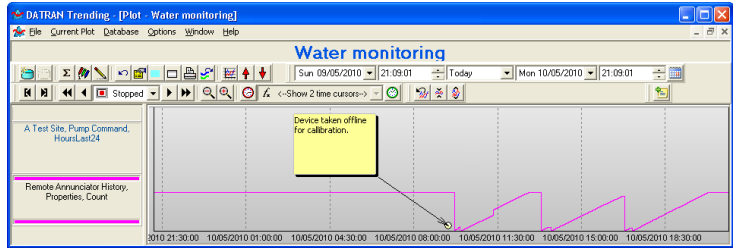
Prerequisites for Upgrade

Prior to upgrading to DATRAN Trending there are a number of points to note and consider.

- **DATRAN Trending Installation**
This is a full installation and not a patch. Therefore, there are no minimum versions of DATRAN Trending as a prerequisite.
No additional licensing requirements are applicable to existing users.
This upgrade needs to be performed on every machine that uses DATRAN Trending, including Terminal Servers if used.
- **Close Applications**
Before installing, please ensure that all DATRAN programs are stopped. It is also recommended that you close all other applications running on the target machine.
- **Base Station Reboot**
Rebooting of the target machine or base station is not required after the installation.
- **Compatibility**
Ensure your DATRAN VI system has the latest software installed, we recommend DATRAN VI version 6.66 SP2.
- **Monitor Display Resolution**
DATRAN Trending v5.00 has been developed for a 1280x1024 screen resolution.
For optimum performance and display area we recommend that 1280x1024 screen resolution is used.

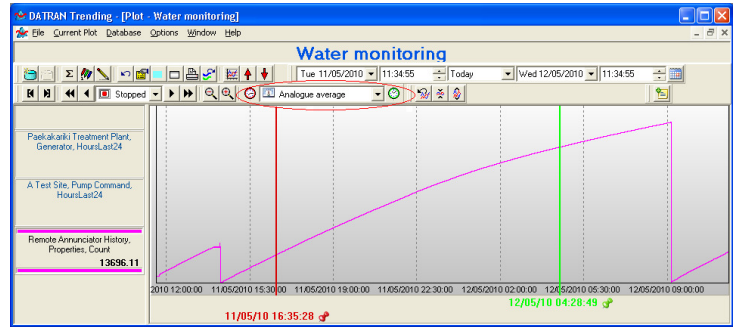
Summary of New Features

- Sticky Notes Feature**
 Now you can add a note to a plot to outline key events. Particularly useful for non compliant, DWS events such as instrument calibration. This new feature provides you with colour options for the note. Simply right click the point or press this new button

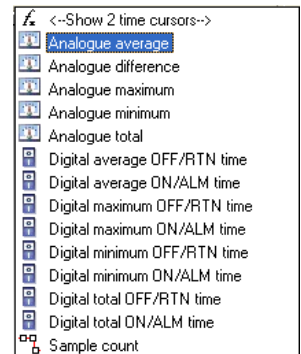


The notes are stored in the *tblPlotNotes* table of the database.

- Dual Time Cursors**
 Adding a second cursor will allow you to perform common statistical analysis of the data between the two cursors. A good example is “what is the average reading between the two points”? Simply click the two new icons to show or hide the time cursors.

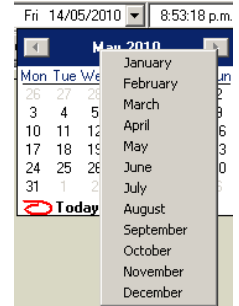


- Analysis Tools**
 A comprehensive list of frequent analysis tools is now provided for both analogue and digital plots.



- **Improved Date Selection**

Changes have been made to the calendar to prevent the “multiple refreshes” when changing both year/month/day. This helps speed up this common task for you, particularly when manipulating a large amount of data.



- **Introduction of Basic and Expert Modes**

These modes have been introduced to best suit the diversity of Trending users.

Simply click *View* to change the modes.

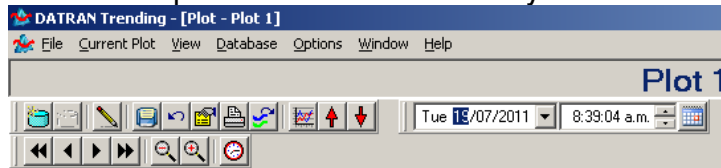


The bottom left pane of the task bar always confirms which mode you are in.



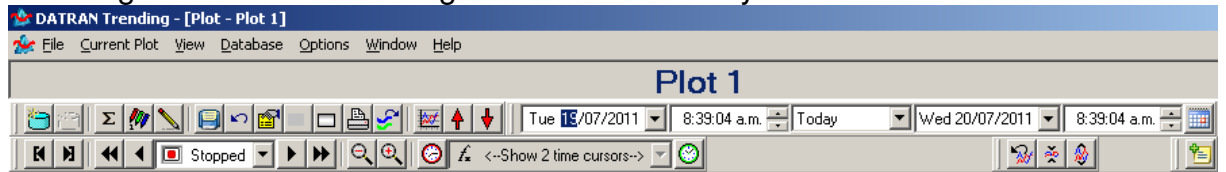
Basic Mode

Basic mode is ideal for new users of Trending as it removes the less commonly used icons and options from the screen layout.



Expert Mode

Expert mode is for familiar users and displays all of the available tools and icons, including the “real time trending” and statistical analysis tools etc.



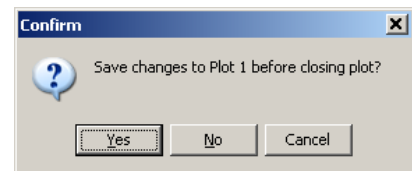
Note - The first time Trending v5 is used, it will default to Basic mode.

Trending will then remember your selected Mode preference for next time. This setting is a registry setting specific to a PC.

- **Save Changes before closing Option**

Until now, any changes made to a plot were “live” and immediately affected all users of the plot. We have now provided a “Save Changes” dialogue.

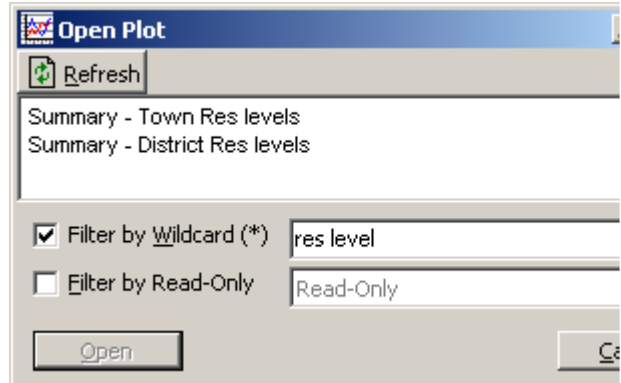
Now you can easily make changes and experiment, and then discard the changes. Discarding changes won’t affect other users of the plot.



- Search Improvements**

The search ability has been improved to help you when looking through a long list of available trends.

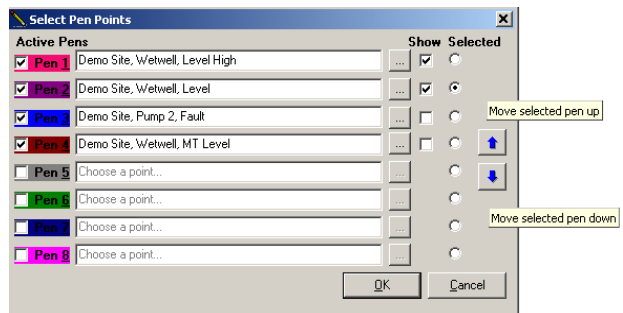
The use of the wildcard “*” has been improved so simply typing “res level” will now show you all trends with “res level” in the title, without having to type “*”. The previous ability for specific searches using “*” is also retained.



- Moving Pens**

Until now, the pens were fixed in the order they were originally created.

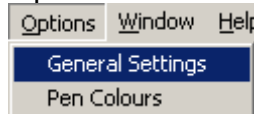
Now you can move the pens up and down the Y axis, ideal for comparing two pens and indeed changing the layout without creating a new plot.



- Extra Customisation Options**

Several changes have been made in this menu to further improve the usability.

These items are found under the Options/General Settings menu.

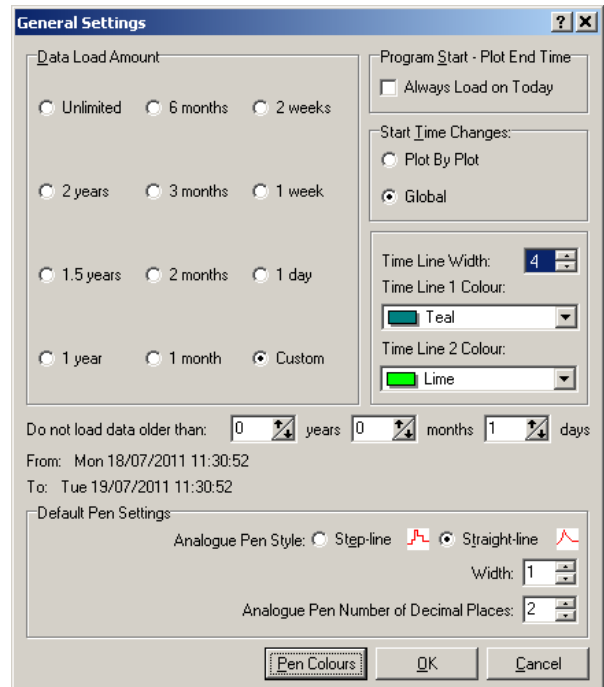


- Custom Data Amount**

Particularly useful if you need a specific (eg 13 months) of data.

- Global and Default Settings**

There are now additional options if you want to apply the same setting to every plot.



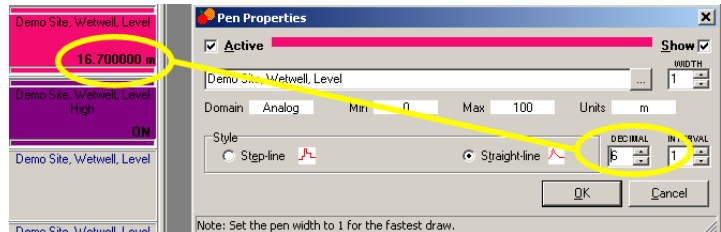
- **Direct Export Data Button**

A new button has been added to the toolbar to directly bring up the CSV data export dialogue. This allows you to perform this frequent task more quickly.



- **Analogue Decimal Places**

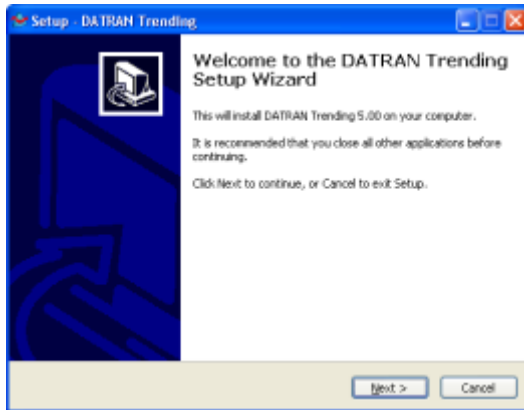
You can now manage how many decimal places a value is displayed in Trending. This is particularly useful for DWS type parameters such as Chlorine.



Installation Procedure

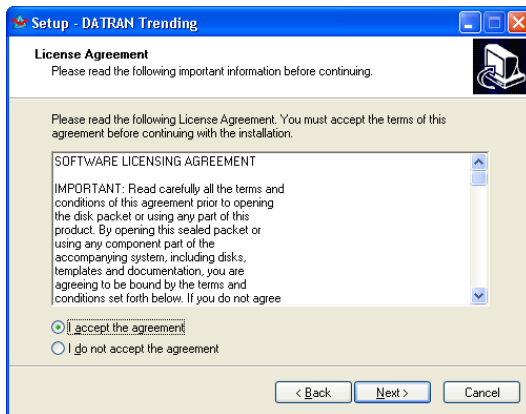
The upgrade is available for all SMA holders from the QTech website.
The file size is approximately 4.0 MB.

To upgrade DATRAN Trending, double click the .exe file and follow the steps as outlined below.



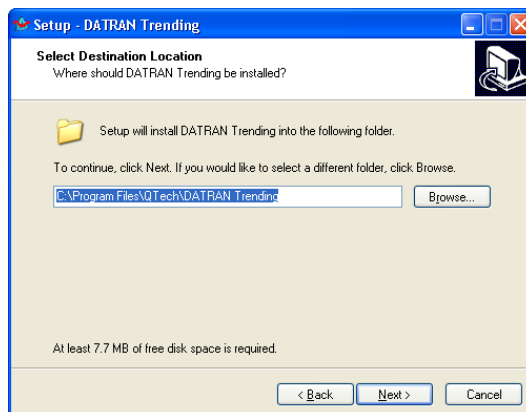
This is the Welcome screen, click **Next**.

Pressing **Cancel** will exit the installation and leave the system unaffected and unchanged.



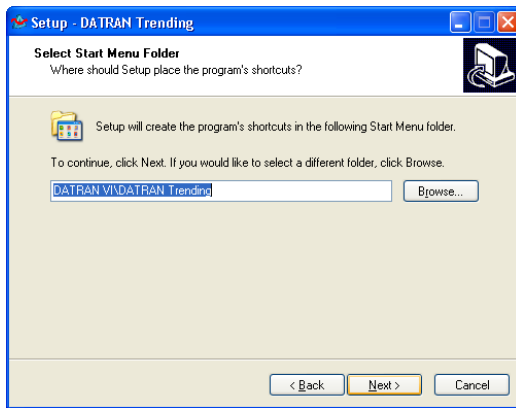
This is the software license screen. Please read all of the terms and conditions and if you agree click **I accept the agreement** and then click **Next**, otherwise click **Back**.

Pressing **Cancel** will exit the installation and leave the system unaffected and unchanged.



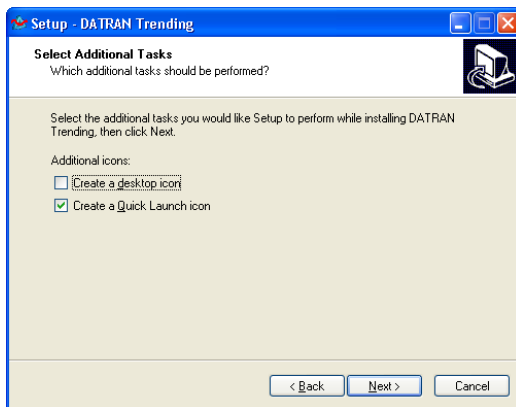
This is the location screen. Click **Next** to accept the default (recommended) location. If you wish to change the location click **Browse**.

Pressing **Cancel** will exit the installation and leave the system unaffected and unchanged.



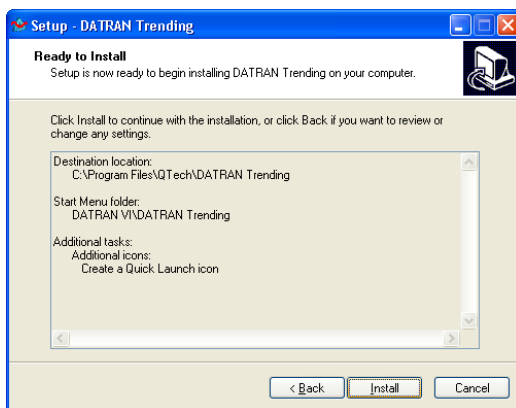
This is the start menu folder screen. To create a shortcut in the default location (recommended) click **Next**. If you wish to change the location click **Browse**.

Pressing **Cancel** will exit the installation and leave the system unaffected and unchanged.



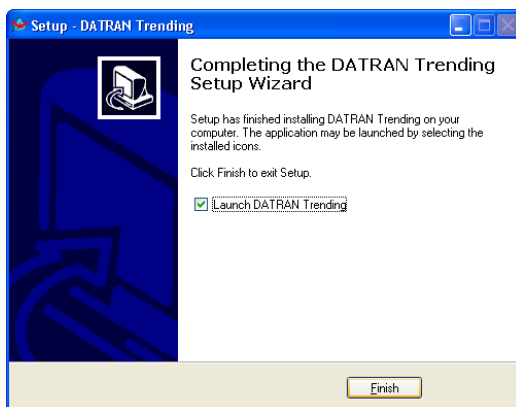
This is the additional task screen. To create a desktop icon check the box and click **Next**.

Pressing **Cancel** will exit the installation and leave the system unaffected or changed.



This is the install screen. To start installation click **Next**.

Pressing **Cancel** will exit the installation and leave the system unaffected and unchanged.



This is the completion screen. For the installation to be complete click **Finish**.

The installation is now complete and DATRAN Trending can be launched.

Summary of Issues Resolved

The following issues have been resolved since DATRAN Trending version 4.50 in February 2010, and are all contained on this upgrade.

New Component Features

QTech Id	Description
216	Time Cursor can be made stationery in plot
1797	Cutting/copying does not include the range which has changed
1806	Second time cursor
3225	Two Cursors
3283	No cancel option in the Pen properties dialogue
3745	Notes on the plot
4075	Do away with read-only plots
4228	Mouse hover to reveal value and date/time no matter what line graph or point graph
4232	Direct export button in toolbar, based on the MS excel icon to speed up regular tasks
4254	Add Default Stop Time to plot properties dialogue
4299	Insert an 18month or 2year option
4303	Start/stop date should change in the plot properties dialogue when default time span change
4312	Apply global setting to all plots. I.e. for step and point graphs
4317	Add Plot Gradient to plot properties dialogue
4321	Hover over plot note dot and get a tool tip
4334	Open an exception in the Windows firewall for Trending
4358	Points and data may be erased from the database without adequate security
4360	Make search without wildcard character more intuitive
4361	Ask the user if he wants to save a plot before closing
4432	Stepped line analogue pens when exported to CSV should use last known value
4458	Up/down arrow to move the pens
4461	Novice/Expert mode
4469	Standardized the splash screen just like DATRAN Supervisor
4475	Automatically open a plot that was manually printed to file
4540	Allow an analogue pen decimals to be defined
4541	Increase the number of decimal points allowed in the Change Range dialogue
4596	Added EurekaLog component
4678	Last 7 days time span
4679	Auto scaling for each pen
4699	Make is easier to tie the templates functionality with the help file
4733	Allow user to save a read-only plot under a different name
4742	Do not interpolate pass the last known value when exporting to CSV

Issues Resolved

QTech Id	Description
4252	Does not pop to the top as desired
4253	Did not uninstall Historical Trending and use old install path
4262	Clicking on a recently used plot from the main menu does not open new plot window
4283	Access violation at address 0048E050 in module 'HistTrend.exe'. Read of address 00000004.
4284	10 seconds automatic poll was wrongly retrieved from DATRAN database
4293	Adjusting the start or stop time redraws the graph automatically
4318	Plot displaying pen line of another plot
4324	Pen don't get added if auto scroll occurred while adding pen
4330	Revert the plot to the original setting button resets the analogue pen range
4336	Adding a new plot note at the bottom of a plot causes the plot note to be hidden
4526	Exporting a plot to CSV with a point that has no data causes access violation
4538	Need to make the help on database repair more obvious
4590	Y-axis min and max is reset after the y-axis is shown/hidden
4591	Setting the data load amount to 0 causes the data unlimited to be turned on
4695	Plot Properties dialogue Default Start Time enabled for read only plot
4705	Pen sort order option in V4.5 does not work correctly
4716	Crashed while doing 10 second auto scroll
4740	'7 day' maximum time span displayed as '1 year'
4741	Integer overflow when stop date changed to some year really big e.g. 2750

Known Issues Not Resolved

The following issue has not been resolved but is logged and will be implemented in future releases.

QTech Id	Description
4079	When moving the toolbars around there is a tendency for them to flicker

Disclaimer

While every endeavour has been made to ensure that the product description is accurate, details are subject to change. QTech Data Systems Ltd reserves the right to alter the system specifications if required. It is our firm intention to continue to develop the features of the DATRAN VI product range and add additional modules.

QTech Data Systems Ltd does not warrant the suitability of this product for any particular application as the conditions in which it is used are beyond our control. This is not withstanding warranty of merchantability.

Increasingly, systems are being connected to the Internet. QTech Data Systems Ltd cannot guarantee these services as being available or functional 100% of the time, as the network connections are beyond our control.

On-going Support

QTech Data Systems Ltd encourages clients to configure their systems to allow remote access via a direct connect modem or internet based VPN. This allows for off-site support from either QTech Data Systems Ltd staff, or in-house staff outside of work hours.

All support will be charged at \$100 +GST per hour plus disbursements.