

## PRODUCT RELEASE NOTICE

### **DATRAN Trending RELEASE 4.50**

**February 2010**

QTech Data Systems Ltd  
Unit 6 Amuri Park  
404 Barbadoes Street  
Christchurch  
New Zealand

Phone: +64 3 3663713  
Fax: +64 3 3652815  
E-mail: [sales@qtech.co.nz](mailto:sales@qtech.co.nz)  
Web [www.qtech.co.nz](http://www.qtech.co.nz)

© 2010 QTech Data Systems Ltd

DATRAN is a registered trademark of QTech Data Systems Ltd

## Table of Contents

Table of Contents.....	2
Introduction .....	3
Prerequisites for Upgrade .....	4
Summary of New Features .....	5
Installation Procedure .....	8
Summary of Issues Resolved.....	10
Known Issues Not Resolved.....	11
Disclaimer.....	12
Ongoing Support.....	12

## Introduction

DATRAN Trending version 4.50 is now available.

DATRAN Trending heralds a name change from the previous “Historical Trending”. This reflects a key new feature which provides “live” real time updating of the display.

DATRAN Trending version 4.50 is a major release which includes all of the fixes and enhancements since the last major release of DATRAN Trending, version 4.01 in September 2008.

The upgrade comes with a user friendly Setup Wizard to help simplify installation. Please forward a copy of this document to your IT/IS provider.

QTech strongly recommend that all systems are updated to this current release.

The following sections of this document describe the installation procedure and all of the enhancements and fixes.

Your feedback on the product and possible future enhancements is always appreciated. Please contact QTech on +64 3 366 3713, or email to [techsupport@qtech.co.nz](mailto:techsupport@qtech.co.nz).

## Prerequisites for Upgrade

Prior to upgrading to DATRAN Trending there are a number of points to note and consider.

- **DATRAN Trending Installation**  
This is a full installation and not a patch. Therefore, there are no minimum versions of DATRAN Trending as a prerequisite.  
No additional licensing requirements are applicable to existing users.  
This upgrade needs to be performed on every machine that uses DATRAN Trending, including Terminal Servers if used.
- **Close Applications**  
Before installing, please ensure that all DATRAN programs are stopped. It is also recommended that you close all other applications running on the target machine.
- **Base Station Reboot**  
Rebooting of the target machine or base station is not required after the installation.
- **Compatibility**  
Ensure your DATRAN VI system has the latest software installed or as a minimum the following: DATRAN VI version 6.60.5
- **Monitor Display Resolution**  
DATRAN Trending v4.50 has been developed for a 1280x1024 screen resolution.  
For optimum performance and display area we recommend that 1280x1024 screen resolution is used.

## Summary of New Features

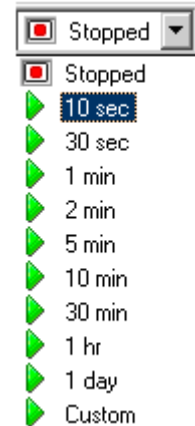
- Real Time Trending**

This exciting new feature turns DATRAN Trending into a real time, “live” graphical tool.

The latest data can now automatically be displayed.

This data will also be automatically scrolled so that it is centred on the display.

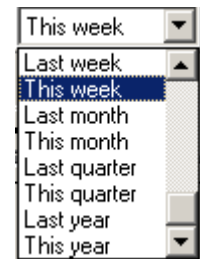
Simply select the refresh rate from the drop down list and the red square to stop.



- Rapid Navigation Option**

A new drop down list allows you to rapidly navigate to a number of common frames.

This allows immediate comparisons of data, without having to manually scroll through the plots.

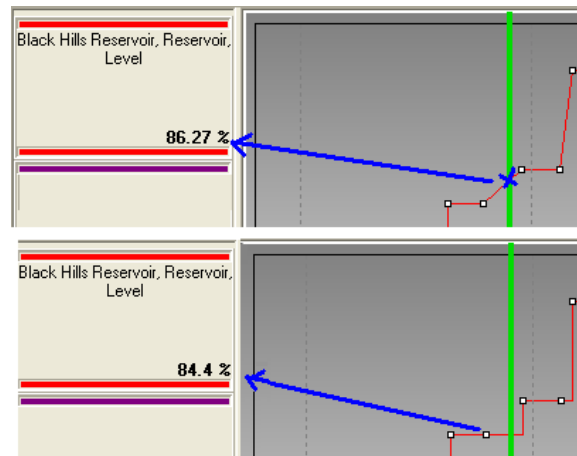


- Step Graph Mode – Data Values**

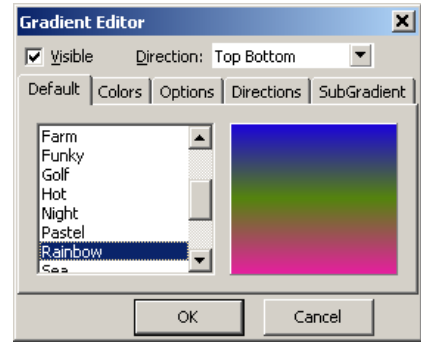
Older, versions of Historical Trending (v3) displayed the value of the point to the left hand side of the time cursor. When v4 was introduced, this changed and referred to the point to the right hand side or the cursor.

We have now provided you with a serious improvement which provides a value based on the “apparent intersection” for line graphs and the value of the point to the left for point graphs.

This is demonstrated in the following example, showing the same point displayed in “line type” at the top and “step type” at the bottom. Note the difference in displayed values.



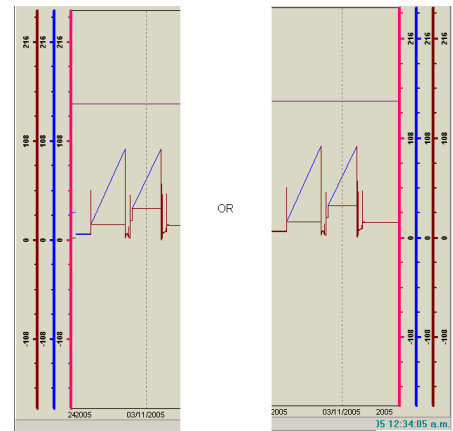
- Enhanced Colour Options**  
 All new colour options, including gradients are now provided.



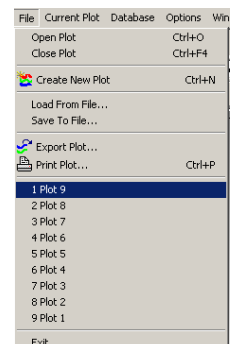
- CSV Export – Data Samples**  
 In the previous version of Trending we introduced the ability to export data at the required interval (granularity) e.g. one minute. This is ideal for consent or DWS compliance data. This functionality has been further improved for digital (on/off) values, as shown in this example where a one hour interval was selected.

	A	B	C
1			
2	Time	Wetwell, Level	Wetwell, Level High
3	23/10/2009 13:45	30.1165772	OFF
4	23/10/2009 14:45	30.4919857	OFF
5	23/10/2009 15:45	30.8673942	OFF
6	23/10/2009 16:45	31.2428027	OFF
7	23/10/2009 17:45	31.6182112	OFF
8	23/10/2009 18:45	31.9936197	OFF
9	23/10/2009 19:45	32.3690282	ON
10	23/10/2009 20:45	32.7444367	ON
11	23/10/2009 21:45	33.1198452	ON
12	23/10/2009 22:45	33.4952537	ON
13	23/10/2009 23:45	33.8706622	ON

- Y Axis Scale – Left and right side of screen**  
 Previously, when many pens are displayed on a plot, having all of the Y axis scales on the left hand side gets cluttered and confusing. Each scale line can now be displayed on either the left or right side. Simply click on the scale line to toggle its position.



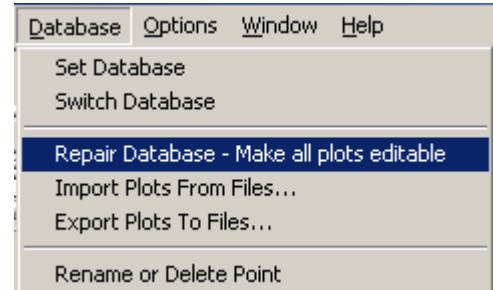
- Recently Used Plot List**  
 In the “File” menu, there is now a list of the nine most recently opened plots. This works just like Word/Excel software and enables you to rapidly open your favourite plots.



- **Database Repair Function**

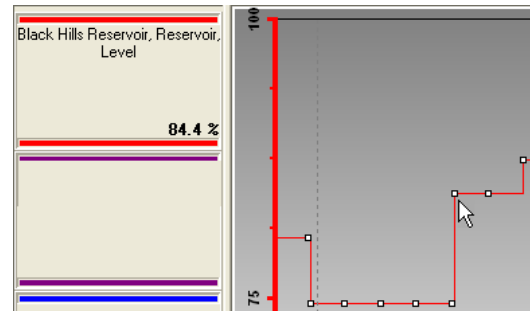
This function has now been integrated into DATRAN Trending.

If a plot is labelled “Read Only”, it is likely another user has it open, or it has been corrupted. Database repair is used to correct the corruption error and remove the “Read Only” characteristic. Database repair is now found under the “Database” menu.



- **Mouse Hover Over – Point Graph Mode**

When displaying a point graph, you can now hover over a discrete point and the value is shown in the pen properties column on the left of the screen. To activate this, the time cursor must not be active, click this icon to toggle the time cursor:



- **Export/Import Plots**

You can now export plots and subsequently import them for use on other DATRAN machines. This helps save you time recreating screens, and ensures a consistency for operators. This is ideal for systems where there are multiple base stations utilising a common database.

The function exports files with a .PTM extension.

- **Cancel Loading Plot Button.**

This new button is particularly useful for remote Trending users on a low speed or bandwidth connection. If the data range is set to “unlimited”, then Trending will become unresponsive and this new button gives you the ability to cancel the loading, and select more appropriate data ranges.

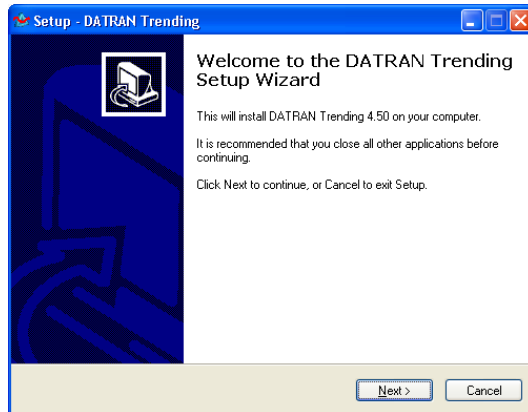
## Installation Procedure

The upgrade is available for download from the QTech website.

Please click the following link:

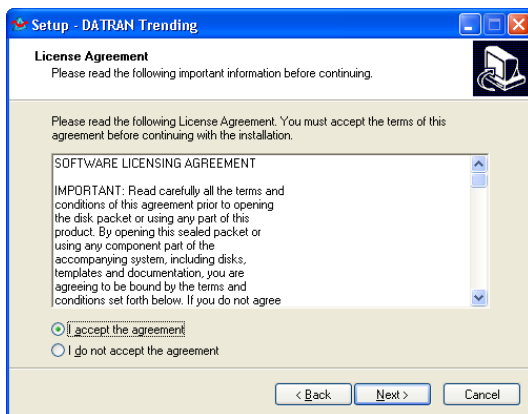
[http://www.qtech.co.nz/software/DATRAN\\_Trending\\_v4\\_50\\_Setup.exe](http://www.qtech.co.nz/software/DATRAN_Trending_v4_50_Setup.exe)

To upgrade the DATRAN Trending machine, double click the file named and follow the steps as outlined below. The file size is approximately 3.5 MB.



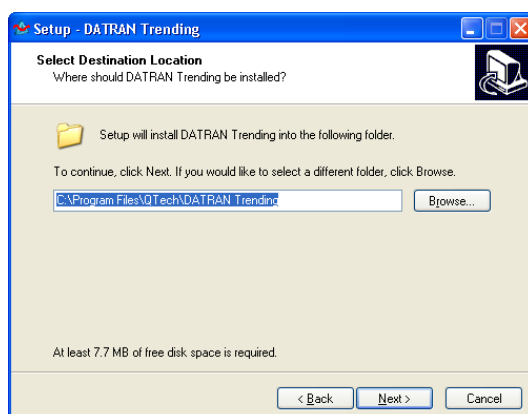
This is the Welcome screen, click **Next**.

Pressing **Cancel** will exit the installation and leave the system unaffected and unchanged.



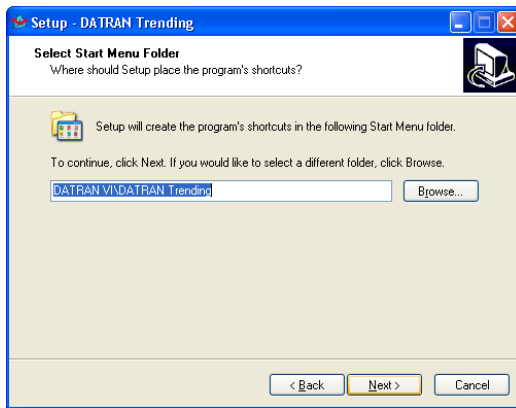
This is the software license screen. Please read all of the terms and conditions and if you agree click **I accept the agreement** and then click **Next**, otherwise click **Back**.

Pressing **Cancel** will exit the installation and leave the system unaffected and unchanged.



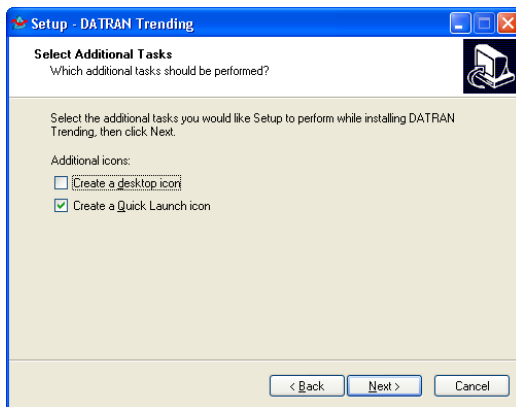
This is the location screen. Click **Next** to accept the default (recommended) location. If you wish to change the location click **Browse**.

Pressing **Cancel** will exit the installation and leave the system unaffected and unchanged.



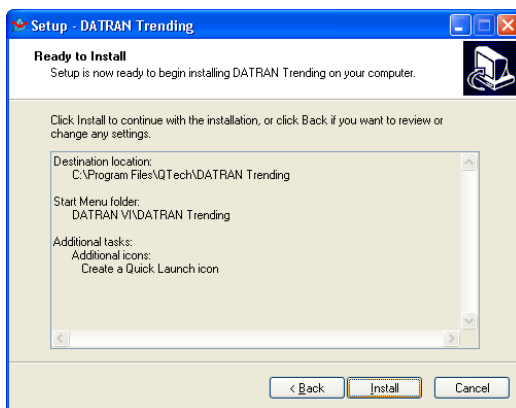
This is the start menu folder screen. To create a shortcut in the default location (recommended) click **Next**. If you wish to change the location click **Browse**.

Pressing **Cancel** will exit the installation and leave the system unaffected and unchanged.



This is the additional task screen. To create a desktop icon check the box and click **Next**.

Pressing **Cancel** will exit the installation and leave the system unaffected or changed.



This is the install screen. To start installation click **Next**.

Pressing **Cancel** will exit the installation and leave the system unaffected and unchanged.



This is the completion screen. For the installation to be complete click **Finish**.

The installation is now complete and DATRAN Trending can be launched.

## Summary of Issues Resolved

The following issues have been resolved since DATRAN Trending version 4.01 in September 2008, and are all contained on this upgrade.

### New Component Features

QTech Id	Description
2811	Export / Import of Plots
4007	Display the Y value of a data point when mouse over just like Supervisor Trending
3838	A list of most recently opened plots
3628	Provide a way to change the default style of analogue pens
3666	Allow the user to rename or delete a point
3296	Exiting the program loses Analogue Range configuration
3187	Can select plot with inverted comma/s in its name
4071	Cancel loading plot button
3658	Integrate the database repair application into DATRAN Trending
4015	Able to have the Y-axis scale on the right instead of the left
4061	The ability to quickly pan to today 24 hours
1942	Periodically polls for latest data and automatically scrolls plot
3833	Names for plot background colours
3835	Export as CSV with specified timer interval.
3831	Icon not consistent
1827	Able to cancel queries that take a long time and/or add a progress bar
3717	Horizontal grid lines and dynamic y-axis interval spacing
3702	During fast zoom set the scales so they are at round numbers
3834	Point Graph indicators
3749	Y-Axis for Digital pens
3747	The ability to choose which point to use as the legend value
3336	Slow to Plot trends which have lots of points
3435	Ctrl key and select multiple plots to open at once
3725	Separate the toolbar into two because it has become too long
3790	Plot Background Colour Names should not be associated with the GUI theme colours

### Issues Resolved

QTech Id	Description
4082	Trying to open a plot that is already open result in a crash
4116	If Trending did not connect successfully the first time accessing File menu cause exception
4081	Re-establish lost database connection: seems unreliable
3995	Event trends don't show all points
4227	Trend is reset after the y-axis is shown/hidden
4155	Change Range should be saved
4152	Incorrect Syntax near S
4151	Max Span has to be larger than Default Span
4153	Graph starts in the wrong place
4154	The pen name no longer appears
4077	Able to reduce the legend panel width until you cannot increase it

	again
4073	Sometimes the wait dialogue shows up and doesn't get hidden
4063	Analogue pen Y axis hidden when plot is shaded
3843	Access violation message appears when mouse hovers over toolbar button
3721	Creates two desktop short cuts
3720	Does not copy the registry settings from HKEY_LOCAL_MACHINE
3761	User input range maximum is enforced to be > minimum, but this constraint no longer applies
3760	Export dialogue

## Known Issues Not Resolved

The following issue has not been resolved but is logged and will be implemented in future releases.

<b>QTech Id</b>	<b>Description</b>
4079	When moving the toolbars around there is a tendency for them to flicker

## Disclaimer

*While every endeavour has been made to ensure that the product description is accurate, details are subject to change. QTech Data Systems Ltd reserves the right to alter the system specifications if required. It is our firm intention to continue to develop the features of the DATRAN VI product range and add additional modules.*

*QTech Data Systems Ltd does not warrant the suitability of this product for any particular application as the conditions in which it is used are beyond our control. This is not withstanding warranty of merchantability.*

*Increasingly, systems are being connected to the Internet. QTech Data Systems Ltd cannot guarantee these services as being available or functional 100% of the time, as the network connections are beyond our control.*

## Ongoing Support

QTech Data Systems Ltd encourages clients to configure their systems to allow remote access via a direct connect modem or internet based VPN. This allows for off-site support from either QTech Data Systems Ltd staff, or in-house staff outside of work hours.

A support services maintenance agreement is available (or users can upgrade from an existing maintenance agreement).

All support will be charged at \$100 +GST per hour plus disbursements.