



# DATRAN™ VI

## PRODUCT RELEASE NOTICE

### **DATRAN Supervisor RELEASE 3.00**

### **September 2010**

QTech Data Systems Ltd  
Unit 6 Amuri Park  
404 Barbadoes Street  
Christchurch  
New Zealand

Phone: +64 3 3663713  
Fax: +64 3 3652815  
E-mail: [sales@qtech.co.nz](mailto:sales@qtech.co.nz)  
Web [www.qtech.co.nz](http://www.qtech.co.nz)

© 2010 QTech Data Systems Ltd

DATRAN is a registered trademark of QTech Data Systems Ltd

## Table of Contents

Table of Contents.....	2
Introduction .....	3
Prerequisites for Upgrade .....	4
Summary of New Features .....	5
Installation Procedure .....	7
Summary of Issues Resolved.....	9
Disclaimer.....	10
Ongoing Support.....	10

## Introduction

DATRAN Supervisor version 3.00 is now available.

This version includes all of the fixes and enhancements since the last major release of DATRAN Supervisor, version 2.36 in February 2010.

The upgrade comes with a user friendly Setup Wizard to help simplify installation. Please forward a copy of this document to your IT/IS provider.

QTech strongly recommend that all systems are updated to this current release.

The following sections of this document describe the installation procedure and all of the features, enhancements and fixes.

Your feedback on the product and possible future enhancements is always appreciated. Please contact QTech on +64 3 366 3713, or email to [techsupport@qtech.co.nz](mailto:techsupport@qtech.co.nz).

## Prerequisites for Upgrade

Prior to upgrading to DATRAN Supervisor version 3.00 there are a number of points to note and consider.

- **DATRAN Supervisor Installation**  
This is a full installation and not a patch; there are no minimum versions of DATRAN Supervisor as a prerequisite.  
No additional licensing requirements are applicable to existing users.  
This upgrade needs to be performed on every machine that uses DATRAN Supervisor, including Terminal Servers if used.
- **Close Applications**  
Before installing please ensure that all programs are stopped. It is also recommended that you close all other applications running on the target machine.
- **Base Station Reboot**  
No rebooting of the target machine or base station is required after the installation.
- **Compatibility**  
Ensure your DATRAN VI system has the latest software installed or as a minimum the following:
  - DATRAN VI version 6.66 including SP1

## Summary of New Features

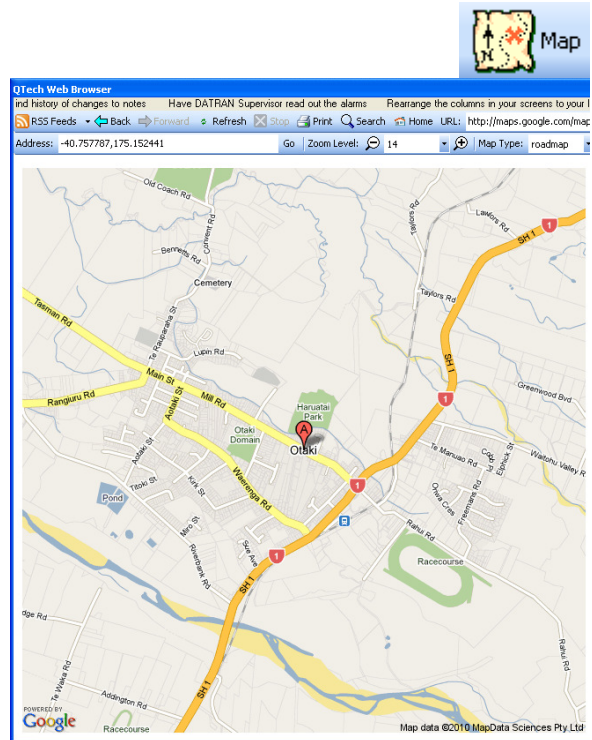
- Google Maps**

Google maps has been integrated into Supervisor.

Google geo codes can be assigned to each site. Once assigned, the location of the site can be quickly shown with a click of a button.

This feature is intended to simplify control room directions to sites and help new operators confirm site locations.

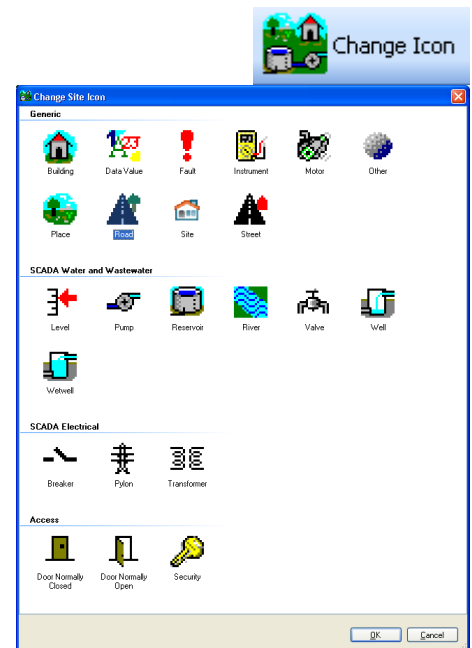
Note: This feature requires permission to access the Internet.



- Site Icons**

To help make sites easier to identify, particularly by function, the following icons have been added.

Now each site can have the most appropriate icon associated with it.



- Mandatory Use of Electronic Notes - Option**

There is now an option to make it mandatory for the operator to record a note before a set point etc is edited.

Electronic Notes has become a very valued feature of Supervisor and this feature reflects customer feedback to ensure notes are used effectively.

- **Save Screen as CSV File**

Click on the *Save As* button in the main menu to save what is displayed on the screen to a CSV file (comma delimited file).

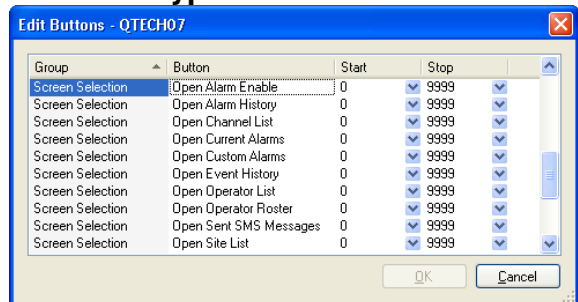
This file can then be opened with any spreadsheet application e.g. Microsoft Excel, for easy manipulation and/or record keeping.

This feature can save you a lot of time when auditing records etc.



- **Security Levels Can be Implemented for each type of Screen**

It is now possible to control the permission to open certain screens to operators depending on their security level (Remote Group value).



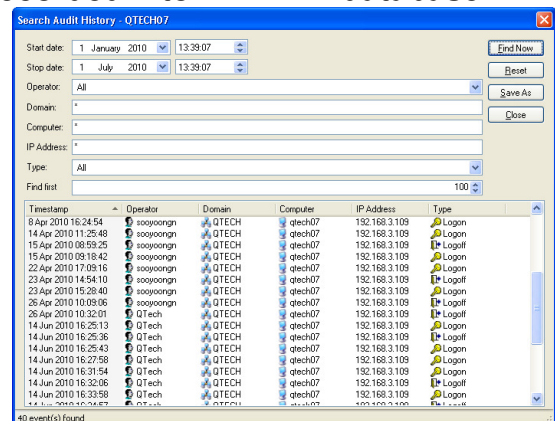
- **Operators log on and log off is now recorded into DATRAN database**

All operator log on and log off activity is now recorded into DATRAN database for improved security and auditing purposes.

This uses a new table in the DATRAN database.

This feature coupled with the “mandatory notes” below give you much clearer tracking of history.

Note: This feature is only enabled for DATRAN VI systems with the ADO Connectivity Module and DATRAN database.



## Installation Procedure

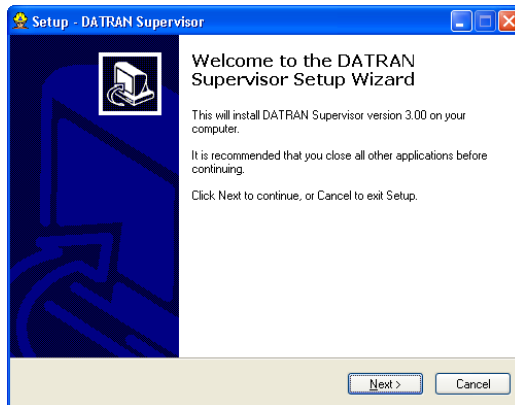
The upgrade is available for download from the QTech website.

Please click the following link:

[DATRAN Supervisor v3 00 Setup.exe](#)

To upgrade the DATRAN Supervisor machine, double click the file named “SetupDATRANSupervisor.exe” and follow the steps as outlined below:

The file size is approximately 2.8 MB.

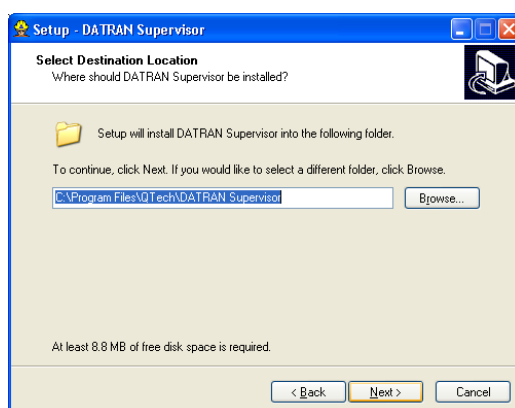


This is the Welcome screen, click **Next**.



This is the software license screen. Please read all of the terms and conditions and if you agree click **I accept the agreement** and then click **Next**, otherwise click **Back**.

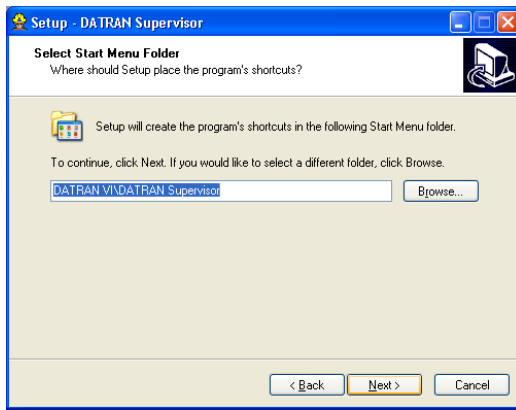
Pressing **Cancel** will exit the installation and leave the system unaffected or changed.



This is the location screen. Click **Next** to accept the default (recommended) location.

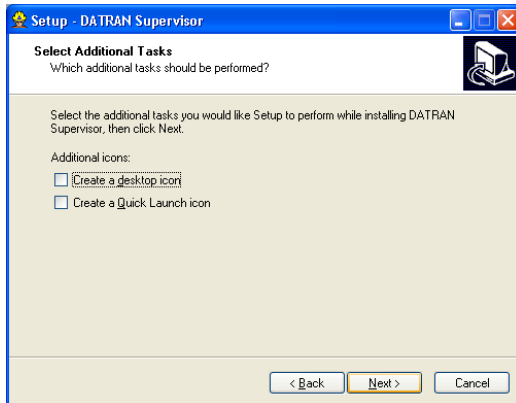
If you wish to change the location click **Browse**.

Pressing **Cancel** will exit the installation and leave the system unaffected or changed.



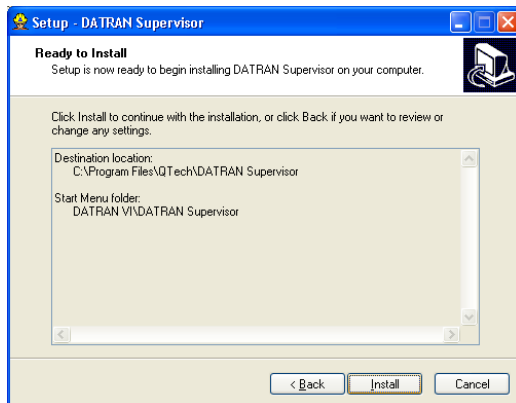
This is the start menu folder screen. To create a shortcut in the default location (recommended) click **Next**. If you wish to change the location click **Browse**.

Pressing **Cancel** will exit the installation and leave the system unaffected or changed.



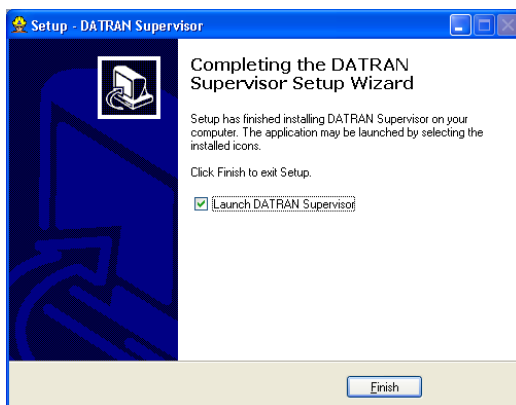
This is the additional task screen. To create a desktop icon check the box and click **Next**.

Pressing **Cancel** will exit the installation and leave the system unaffected or changed.



This is the install screen. To start installation click **Next**.

Pressing **Cancel** will exit the installation and leave the system unaffected or changed.



This is the completion screen. For the installation to be complete click **Finish**.

The installation is now complete and DATRAN Supervisor can be launched.

## Summary of Issues Resolved

The following issues have been resolved since the last general release of DATRAN Supervisor version 2.36 in February 2010, and are all contained in this upgrade.

### New Component Features

QTech Id	Description
3768	CSV Export feature for summarising alarms Etc
3839	Implement security level for each type of screen
3845	A more visible menu item to change the buttons security levels
3942	Log when operators log on and log off into DATRAN database
4111	Selected columns – global setting
4135	Have two shortcuts that direct to the base or replicated base as in the old days with Console
4179	Can you retrieve or export point notes to a file
4187	Date/time format in notes dialogue should follow the calling form
4188	Able to make it mandatory for an operator to add notes when acknowledging alarms or editing points
4193	Allow the user to change the background image of the data grid
4195	Allow the user to change site icon
4199	Add RTU icon to Site List screen
4200	Font colour in Site List screen should follow Site screen
4202	Add icons to the rest of the screens
4205	More sensible text in the firmware version number
4207	Add tab page context menu strip just like in Firefox
4208	Add Google Maps
4323	Site List screen to show the Serial Number of the RTU
4440	Add a help topic on how to use the mandatory notes feature

### Issues Resolved

QTech Id	Description
2787	Should be made clear that all Search Criteria are used
3152	Explain how new items are added to a sorted grid
3847	Remove Channel List Choose Columns dialogue scroll bars
3915	Top rows are hidden after filter is reset
3923	Cut and copy command doesn't work on Diagnostics pane when it is on floating dock
4008	Sorting of the Site screen should be retained as the user navigates between sites
4192	The Operator Roster screen doesn't refresh after a channel re-logout
4206	Electronic Notes history not viewable immediately after a delete
4267	Occasional crash while logging off
4296	Crashed while running against a certain TBD file
4313	Pressing OK accepts the change, but the window pops back up
4377	"find server" button didn't find my server
4414	Crash while closing Supervisor
4416	Save As dialogue should be defaulted with screen name
4424	Object reference not set to an instance of an object.
4428	A low level user can change the buttons he can have access to

3155	DATRAN Supervisor Installer improvements
3148	Explain how the colour information inside _View_ affects the colours in Supervisor
4072	Add a "how to" section for using Aliases in Supervisor Help
4430	Full screen makes Supervisor hidden in double monitor system
4438	Cannot change Geo Code once it is assigned to a site
4439	Zoom in and zoom out via + and - number keys never worked
4441	Font size on some Site List columns don't change when text size changed
4442	Crash while opening Edit Buttons dialogue box
4443	Index was out of range. Must be non-negative and less than the size of the collection.
4455	Tabs inside site notes mess up the whole notes functionality

## Disclaimer

*While every endeavour has been made to ensure that the product description is accurate, details are subject to change. QTech Data Systems Ltd reserves the right to alter the system specifications if required. It is our firm intention to continue to develop the features of the DATRAN VI product range and add additional modules.*

*QTech Data Systems Ltd does not warrant the suitability of this product for any particular application as the conditions in which it is used are beyond our control. This is not withstanding warranty of merchantability.*

*Increasingly, systems are being connected to the Internet. QTech Data Systems Ltd cannot guarantee these services as being available or functional 100% of the time, as the network connections are beyond our control.*

## Ongoing Support

QTech Data Systems Ltd encourages clients to configure their systems to allow remote access via a direct connect modem or internet based VPN. This allows for off-site support from either QTech Data Systems Ltd staff, or in-house staff outside of work hours.

A support services maintenance agreement is available (or users can upgrade from an existing maintenance agreement).

All support will be charged at \$100 +GST per hour plus disbursements.