



DATRAN™ VI

PRODUCT RELEASE NOTICE

DATRAN Supervisor RELEASE 3.10

April 2011

QTech Data Systems Ltd
Unit 6 Amuri Park
404 Barbadoes Street
Christchurch
New Zealand

Phone: +64 3 3663713
Fax: +64 3 3652815
E-mail: sales@qtech.co.nz
Web: www.qtech.co.nz

© 2011 QTech Data Systems Ltd

DATRAN is a registered trademark of QTech Data Systems Ltd

Table of Contents

Table of Contents.....	2
Introduction	3
Prerequisites for Upgrade	4
Summary of New Features	5
Installation Procedure	7
Summary of Issues Resolved.....	9
Disclaimer.....	10
On going Support.....	10

Introduction

DATRAN Supervisor version 3.10 is now available.

This version includes all of the fixes and enhancements since the last major release of DATRAN Supervisor, version 3.00 in September 2010.

The upgrade comes with a user friendly Setup Wizard to help simplify installation. Please forward a copy of this document to your IT/IS provider.

QTech strongly recommend that all systems are updated to this current release.

The following sections of this document describe the installation procedure and all of the features, enhancements and fixes.

Your feedback on the product and possible future enhancements is always appreciated. Please contact QTech on +64 3 366 3713, or email to techsupport@qtech.co.nz.

Prerequisites for Upgrade

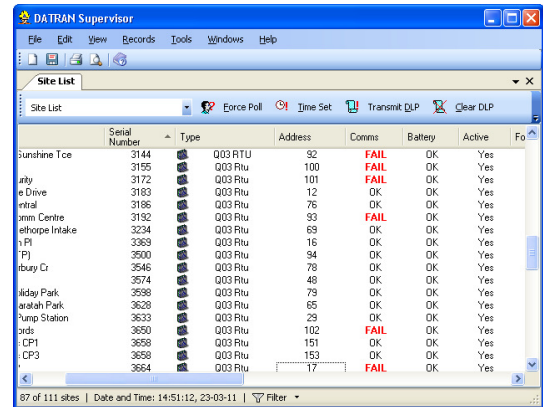
Prior to upgrading to DATRAN Supervisor version 3.10 there are a number of points to note and consider.

- **DATRAN Supervisor Installation**
This is a full installation and not a patch; there are no minimum versions of DATRAN Supervisor as a prerequisite.
No additional licensing requirements are applicable to existing users.
This upgrade needs to be performed on every machine that uses DATRAN Supervisor, including Terminal Servers if used.
- **Close Applications**
Before installing please ensure that all programs are stopped. It is also recommended that you close all other applications running on the target machine.
- **Base Station Reboot**
No rebooting of the target machine or base station is required after the installation.
- **Compatibility**
Ensure your DATRAN VI system has the latest software installed or as a minimum the following:
 - DATRAN VI version 6.66 including SP2 (v6.66.2)

Summary of New Features

- RTU Serial Numbers**
 The serial numbers of the RTUs are now shown on the Site List screen.

This is useful for asset management purposes as it allows you to understand the site status at a glance.

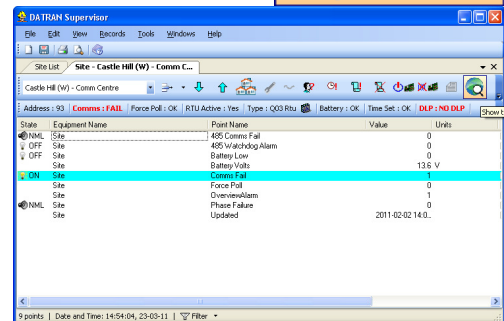
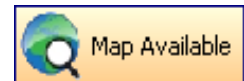


Remember that this data can also be exported into a spreadsheet via the File/Save As option to give you a complete record of serial number and firmware versions etc.

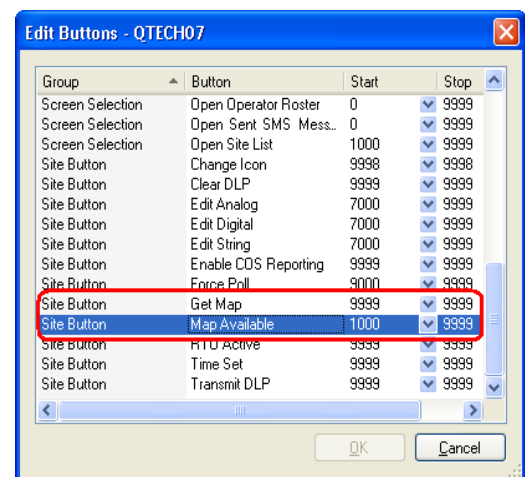
Type	Serial Number	Firmware Version Number
Q03 RTU	3286	5.1
Q03 RTU	1730	5.21
Q03 RTU	2777	5.2
Q03 RTU	3609	5.22
Q03 RTU	3537	5.21

- Google Maps - Available button**
 Google maps was integrated in to Supervisor in v3.0 and is now being widely used.

This button is now available in Site screens provided a Google Maps geo code has been assigned to the site. Clicking on this button brings up a map showing the geographical location of this site.

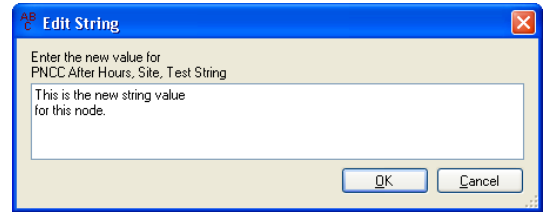


- Map buttons can be restricted**
 The ability to assign a Google Map geo code to a site and the ability to view the map can now be restricted. This ability is defined by the DATRAN operators Remote Group security. Previously all operators could both assign the map and view them.



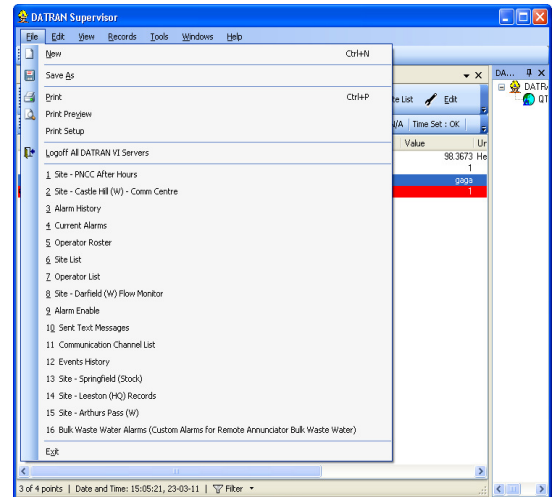
- **The ability to edit string values inside nodes**

If a node under a site is exposed using the “Output=1 String=1” syntax within a `_View_` node then it can now be edited from the corresponding Site screen in Supervisor.



- **Most recently used list**

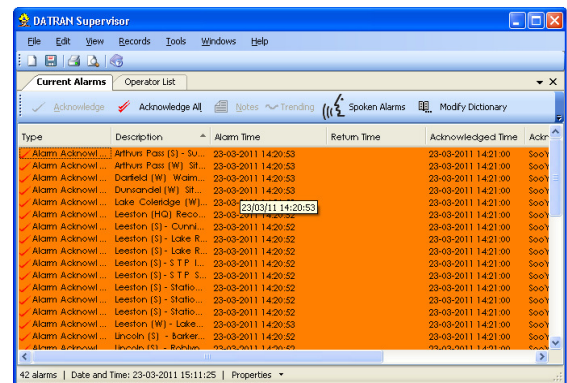
Under the File menu is a list of 16 most recently used screens. This is especially useful if you want to quickly bring a certain Site screen without going through the Site List screen.



- **Open many screens from command line**

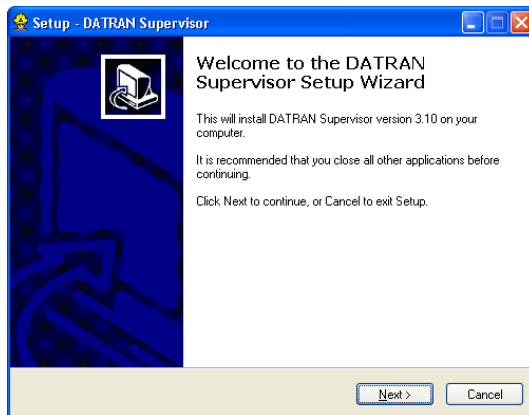
This feature is useful if you are opening Supervisor from the command prompt or HMI applications such as DATRANVue. With this feature, you can now open more than one screen by specifying which screens you want to open. For example the following command opens up the Current Alarms screen and Operator List screen simultaneously:

```
QTechDataSystems.DatranVI.Su
pervisor.exe "Current
Alarms" "Operator List"
```



Installation Procedure

To upgrade the DATRAN Supervisor machine, double click the file named "SetupDATRANSupervisor.exe" and follow the steps as outlined below:

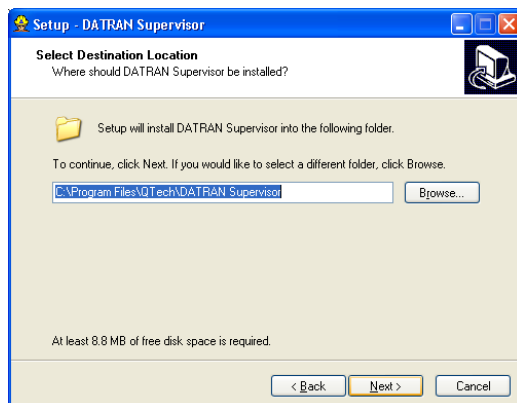


This is the Welcome screen, click **Next**.



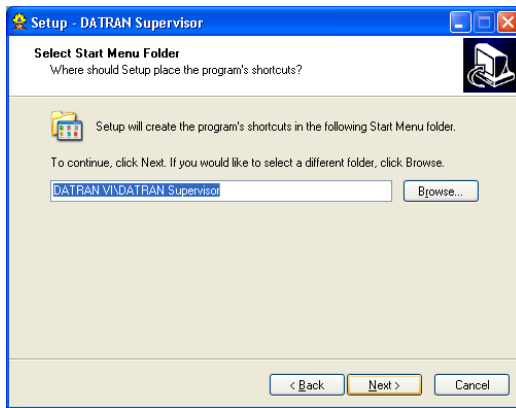
This is the software license screen. Please read all of the terms and conditions and if you agree click **I accept the agreement** and then click **Next**, otherwise click **Back**.

Pressing **Cancel** will exit the installation and leave the system unaffected or changed.



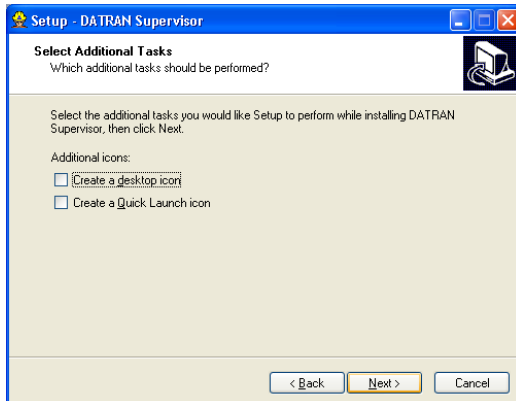
This is the location screen. Click **Next** to accept the default (recommended) location. If you wish to change the location click **Browse**.

Pressing **Cancel** will exit the installation and leave the system unaffected or changed.



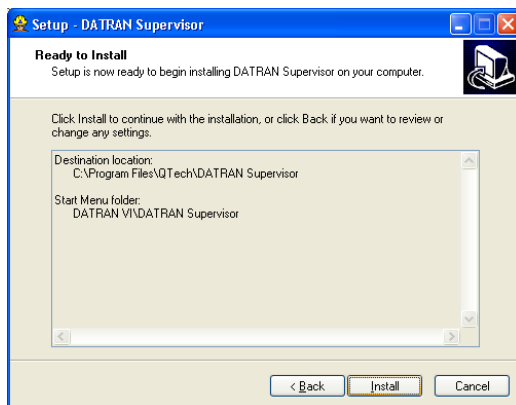
This is the start menu folder screen. To create a shortcut in the default location (recommended) click **Next**. If you wish to change the location click **Browse**.

Pressing **Cancel** will exit the installation and leave the system unaffected or changed.



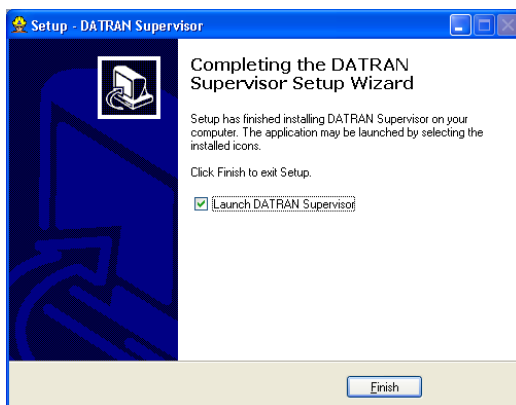
This is the additional task screen. To create a desktop icon check the box and click **Next**.

Pressing **Cancel** will exit the installation and leave the system unaffected or changed.



This is the install screen. To start installation click **Next**.

Pressing **Cancel** will exit the installation and leave the system unaffected or changed.



This is the completion screen. For the installation to be complete click **Finish**.

The installation is now complete and DATRAN Supervisor can be launched.

Summary of Issues Resolved

The following issues have been resolved since the last general release of DATRAN Supervisor version 3.00 in September 2010, and are all contained in this upgrade.

New Component Features

QTech Id	Description
3788	Supervisor will not display the scaled version of the node
4231	Would be nice to have it open up with both current alarms and historical alarms
4261	A list of 9 most recently opened screens
4287	Allow the user to edit string values within a string type node
4445	Only allow certain operators to change site icon and assign Google Maps geocode
4493	A map button on the bar
4574	Change the foreground colour instead of the background colour when they are both the same
4585	Have a description for a dummy station & dummy channel
4603	Site screen should show the Serial Number of the RTU
4606	Add ECAN Logger icon to Site List screen
4608	Handle hexadecimal address in ECAN Loggers

Issues Resolved

QTech Id	Description
4488	Access problems are created by Supervisor remembering previously open stations
4492	(407) Proxy Authentication Required
4494	Scroll bar jumps to the bottom when scroll to top
4499	During the earthquake event Supervisor became very slow and unresponsive
4507	Clicking on row brings up the row as if the bottom row is half way
4552	Installer instructions are misleading
4593	More... option is not available for columns of certain screens
4658	Socket exception occurred on changing the operator roster
4661	Site not updating because Supervisor complaining no _View_ nodes
4662	Saving a filtered site screen causes exception
4663	Diagnostics pane Date column visibility not remembered
4665	Exception occurred while applying current site screen configure to other site screens

Disclaimer

While every endeavour has been made to ensure that the product description is accurate, details are subject to change. QTech Data Systems Ltd reserves the right to alter the system specifications if required. It is our firm intention to continue to develop the features of the DATRAN VI product range and add additional modules.

QTech Data Systems Ltd does not warrant the suitability of this product for any particular application as the conditions in which it is used are beyond our control. This is not withstanding warranty of merchantability.

Increasingly, systems are being connected to the Internet. QTech Data Systems Ltd cannot guarantee these services as being available or functional 100% of the time, as the network connections are beyond our control.

On-going Support

QTech Data Systems Ltd encourages clients to configure their systems to allow remote access via a direct connect modem or internet based VPN. This allows for off-site support from either QTech Data Systems Ltd staff, or in-house staff outside of work hours.

A support services maintenance agreement is available (or users can upgrade from an existing maintenance agreement).

All support will be charged at \$100 +GST per hour plus disbursements.