



DATRAN™ VI

PRODUCT RELEASE NOTICE

DATRAN Reporting

(Data Reporting Design and Runtime Application)

RELEASE 4.00

November 2010

QTech Data Systems Ltd
Unit 6 Amuri Park
404 Barbadoes Street
Christchurch
New Zealand

Phone: +64 3 3663713
Fax: +64 3 3652815
E-mail: sales@qtech.co.nz
Web www.qtech.co.nz

© 2010 QTech Data Systems Ltd

DATRAN is a registered trademark of QTech Data Systems Ltd

Table of Contents

Table of Contents	2
Introduction	3
Prerequisites for Upgrade	4
Summary of New Features	5
Installation Procedure	6
Summary of Issues Resolved	9
Disclaimer	10
Ongoing Support.....	10

Introduction

QTech are delighted to launch DATRAN Reporting version 4.00.

DATRAN Reporting is built on a completely new "ReportBuilder" engine (version 12.02) providing dramatic improvement to the user interface and speed of report generation.

DATRAN Reporting is ideal for in house report development from the DATRAN telemetry / SCADA systems logged data.

The application is directly aware of the DATRAN database structure and table set making report generation more convenient and easier.

Increasingly there are demands to provide operational and regulatory reporting on DATRAN VI SCADA systems, particularly under DWSNZ: 2008.

DATRAN Reporting, with its Report Designer Wizard, provides a step by step guide in report creation and development.

Automated running of scheduled reports and the ability to export data via email and to an FTP server are of significant benefit.

This release comes with a user friendly Setup Wizard to help simplify installation.

QTech strongly recommends existing users of DATRAN Reporting upgrade to version 4.00.

The following sections of this document describe the installation procedure and the enhancements.

Your feedback on the product and possible future enhancements is always appreciated. Please contact QTech on +64 3 366 3713 or email techsupport@qtech.co.nz.

Prerequisites for Upgrade

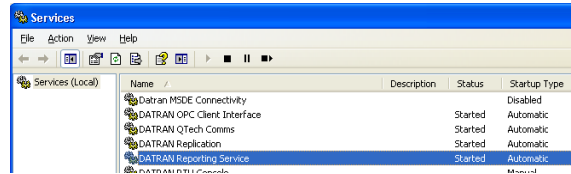
This version replaces all previous versions of DATRAN Reporting.

- **Backward Compatibility**
This is a full release version and replaces all existing versions. Reports built with previous versions are still available and can be used with the new version.
- **Software Licensing**
No additional licensing is required for registered users. Multiple user licenses are available as required.
- **Close Applications**
Before installing it is recommended that you close all applications running on the target machine.
- **PC Reboot**
No rebooting of the target machine is required after the installation.

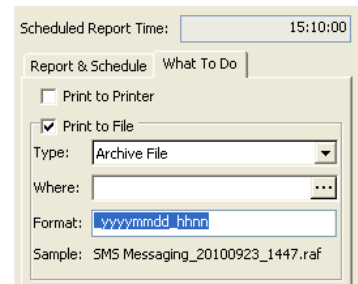
Summary of New Features

New Component Features:

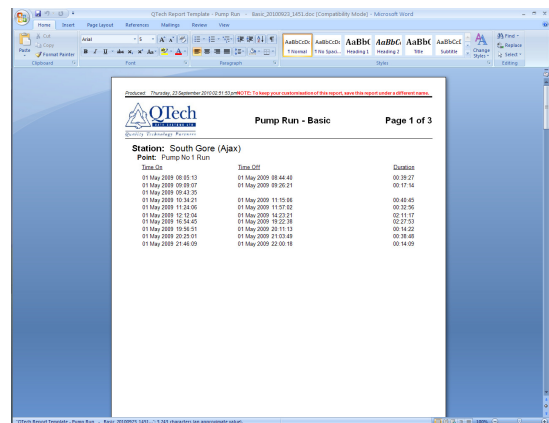
- DATRAN Reporting Service**
 DATRAN Reporting has been implemented as a Windows Service. This allows the scheduled reports to be generated in the background without the need to be logged into Windows. This ensures that reports are generated even if Reporting has been inadvertently closed.



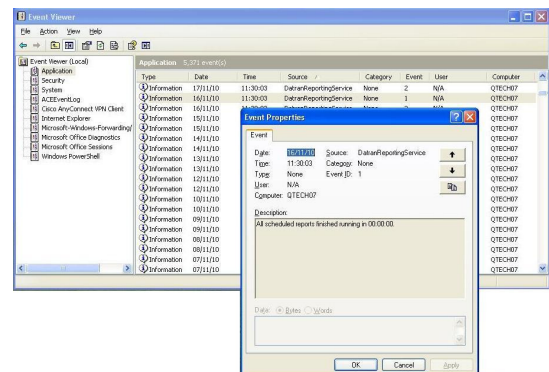
- Enhanced Reporting options**
 The format of the date and/or time that is appended to the report file name can be changed.



- New Report File Types**
 DATRAN Reporting can now export reports directly as:
 1. Bitmap image
 2. JPEG image
 3. GIF image
 4. Windows Metafile
 5. Rich Text Format
 6. Microsoft Word
 7. Microsoft Excel data
 8. Microsoft Excel report
 These new options are industry driven to provide you with even more flexibility distributing the DATRAN reports in popular, non proprietary "open" formats.



- Event Viewer and Log**
 There is now an event viewer with event log. This confirms when scheduled reports were sent and will improve troubleshooting.



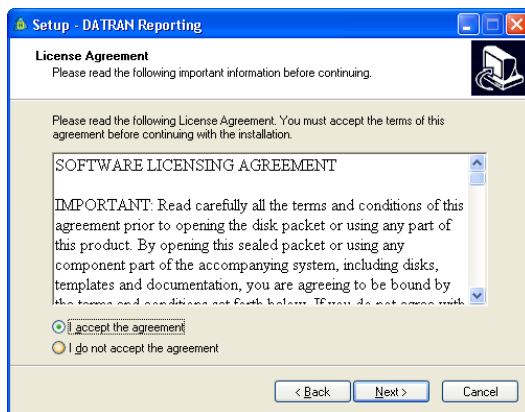
Installation Procedure

The software is available as a download from the QTech website, please [click here](#) to download and then follow the instructions below.

If the software is supplied on a CD, insert the CD into your CDROM drive and it should automatically run the installation menu system. If you have CD auto run turned off, then using File Explorer, you will need to navigate to the *MainMenu* folder on the CD and double click on *Autorun.exe*.

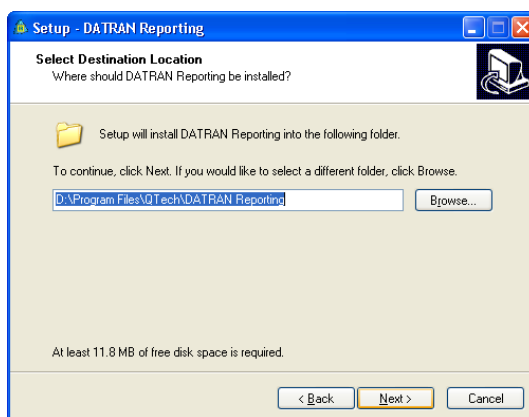


This is the Welcome screen, click **Next**.



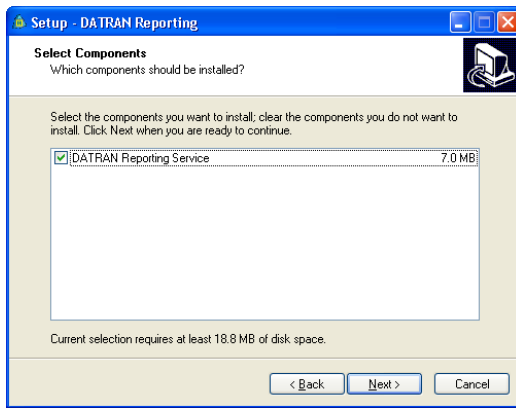
This is the software license screen. Please read all of the terms and conditions and if you agree click **I accept the agreement** and then click **Next**, otherwise click **Back**.

Pressing **Cancel** will exit the installation and leave the system unaffected and unchanged.



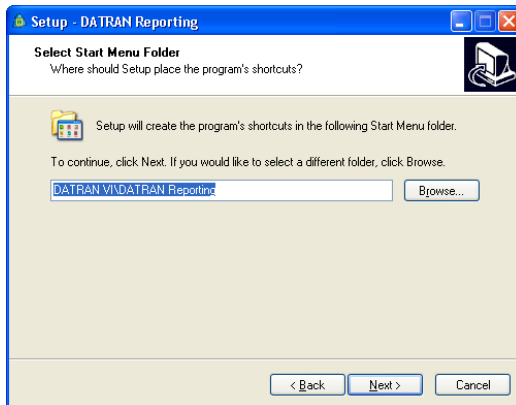
This is the location screen. Click **Next** to accept the default (recommended) location. If you wish to change the location click **Browse**.

Pressing **Cancel** will exit the installation and leave the system unaffected and unchanged.



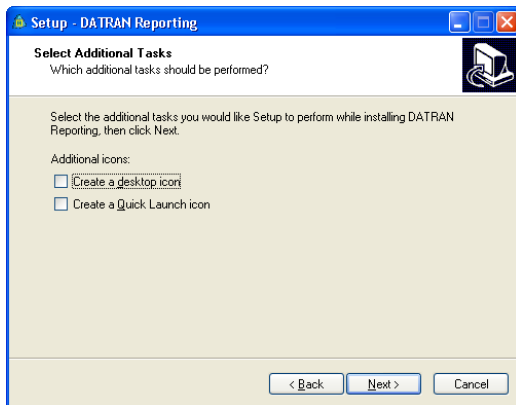
This is the select components screen. Tick the DATRAN Reporting Service checkbox if you want this computer to be running the scheduled reports. Click **Next**.

Pressing **Cancel** will exit the installation and leave the system unaffected and unchanged.



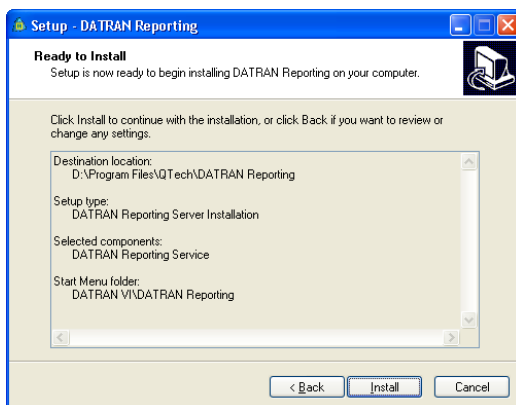
This is the start menu folder screen. To create a shortcut in the default location (recommended) click **Next**. If you wish to change the location click **Browse**.

Pressing **Cancel** will exit the installation and leave the system unaffected and unchanged.



This is the additional task screen. To create these icons check the required box(s) and click **Next**.

Pressing **Cancel** will exit the installation and leave the system unaffected and unchanged.



This is the install screen. To start installation click **Next**.

Pressing **Cancel** will exit the installation and leave the system unaffected and unchanged.

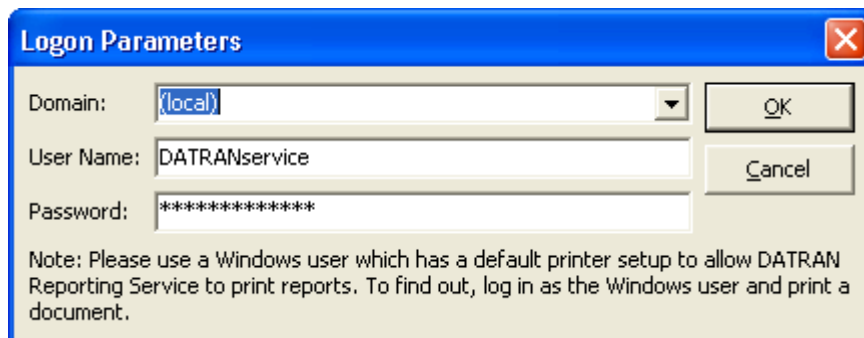


This is the completion screen. For the installation to be complete click **Finish**.

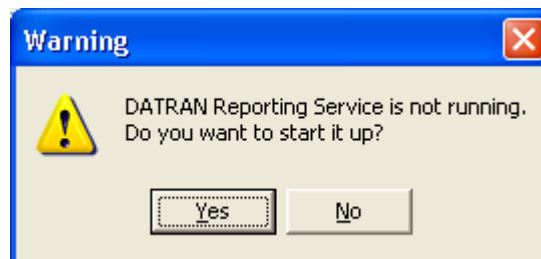
The installation is now complete and DATRAN Reporting can be launched.

If you have opted to install DATRAN Reporting Service and this is the first time it has ever been installed, you will be prompted with the Logon Parameters dialogue box. Please enter the Windows username and password of a Windows user that has a default printer setup. This allows DATRAN Reporting Service to send scheduled reports to the default printer.

The default Windows user is DATRAN service which will be valid if you are installing on a computer that already has DATRAN VI installed. Remember to change the password if the DATRAN service password is no longer the default password.



If you opted to install DATRAN Reporting Service and this is not the first time it has been installed, you will get a warning that it is currently not running. It is recommended that you click Yes to start the DATRAN Reporting Service.



Summary of Issues Resolved

The following issues/features have been resolved/implemented since DATRAN Reporting v3.10

QTech Id	Description
4482	Access violation message pops up when mouse hovers over toolbar button
4479	DATRAN Reporting Service did not pick up license saved in another user registry
4478	Remember the path where the last file was printed to
4473	Allow user to launch Events Viewer and Services from desktop application
4472	Automatically open a report that was manually printed to file
4471	Add support for MS Word and MS Excel
4468	Standardized the splash screen just like DATRAN Supervisor
4467	A button to refresh the list of scheduled reports
4465	Installer must allow DATRAN Reporting to connect to an external FTP server
4463	Change report rename shortcut to something other than backslash
4457	Change Windows username and password on DATRAN Reporting Service
4456	Put an event log in Windows each time a report is printed/saved/mailed/transferred to FTP server
4422	No need to log into database if already log in once before
4401	Allow user to define how automatically generated files should be named
4398	Automatically recovers from a SQL Server reboot/restart
4384	Cannot open help from the main menu while designing report
4367	Manual run of scheduled report should disregard Next Run Date
4172	Cannot get the operator name to show in the report using SMS Messaging View
4171	When scheduling a report for FTP, get the default FTP settings from Tools Options
4108	Reporting Template – Alarm Report: The duration is wrong
4068	Standardised the version information that the user sees
4058	Check that the QTech report templates are old before updating them
4051	Thinks that a FTP directory does not exist when it actually does
4024	Turning the scheduled report into a Windows NT service

Disclaimer

While every endeavour has been made to ensure that the product description is accurate, details are subject to change. QTech Data Systems Ltd reserves the right to alter the system specifications if required. It is our firm intention to continue to develop the features of the DATRAN VI product range and add additional modules.

QTech Data Systems Ltd does not warrant the suitability of this product for any particular application as the conditions in which it is used are beyond our control. This is not withstanding warranty of merchantability.

Increasingly, systems are being connected to the Internet. QTech Data Systems Ltd cannot guarantee these services as being available or functional 100% of the time, as the network connections are beyond our control.

Ongoing Support

QTech Data Systems Ltd encourages clients to configure their systems to allow remote access via a direct connect modem or internet based VPN. This allows for off-site support from either QTech Data Systems Ltd staff, or in-house staff outside of work hours.

A support services maintenance agreement is available (or users can upgrade from an existing maintenance agreement).

All support will be charged at \$100 +GST per hour plus disbursements.