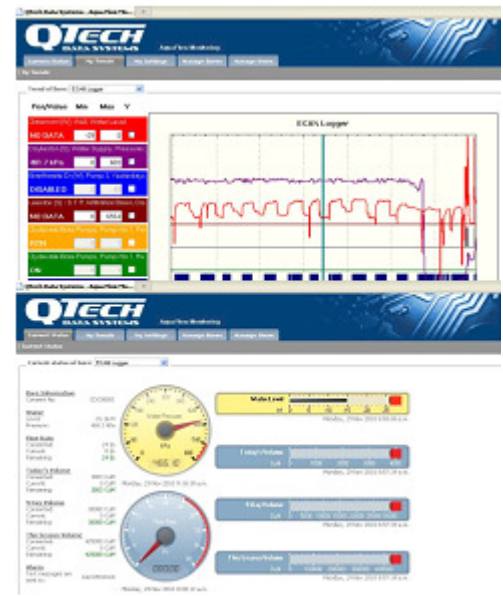


Aqua Flow Management System

The complete irrigation and resource consent data collecting solution



QTech is an established New Zealand telemetry specialist with over 25 years of experience in the water industry.

Our latest technology provides you with a simple yet comprehensive solution for water consumption monitoring and resource consent data collection and reporting.

The AFM System is an Environment Canterbury "ECan approved supplier list" solution that simplifies your compliance.

The QTech AFM System comprises a sophisticated electronic device that is a combined data logger and wireless cellular transmitter.

This transmitter uses the Vodafone cellular network to transmit the logged data to a safe database, called Datahost.

The AFM cell logger automatically sends you an SMS/text messages when you reach 90% & 100% of your consent.

Datahost allows you to view the logged data from a web browser (eg Internet Explorer) via a secure log in.

Datahost clearly shows you the water level, pressure, flow rate and your remaining allocation! It even shows a summary of the season to date and graphical trends.

QTech can then also provide this data directly to the regional authority.

Key Features include:

- Data Log more than 250,000 readings
- Retains the logged data for up to 100 years
- Easy mounting and installation
- Low power, suitable for battery, mains & solar sites
- Vodafone (GPRS) network support for data transfer
- Automatic SMS warning alerts from the AFM cell logger
- High quality website graphical interface
- Expandable solution to grow as you grow
- Fast and efficient operation
- Manage your own website users

Key Benefits include:

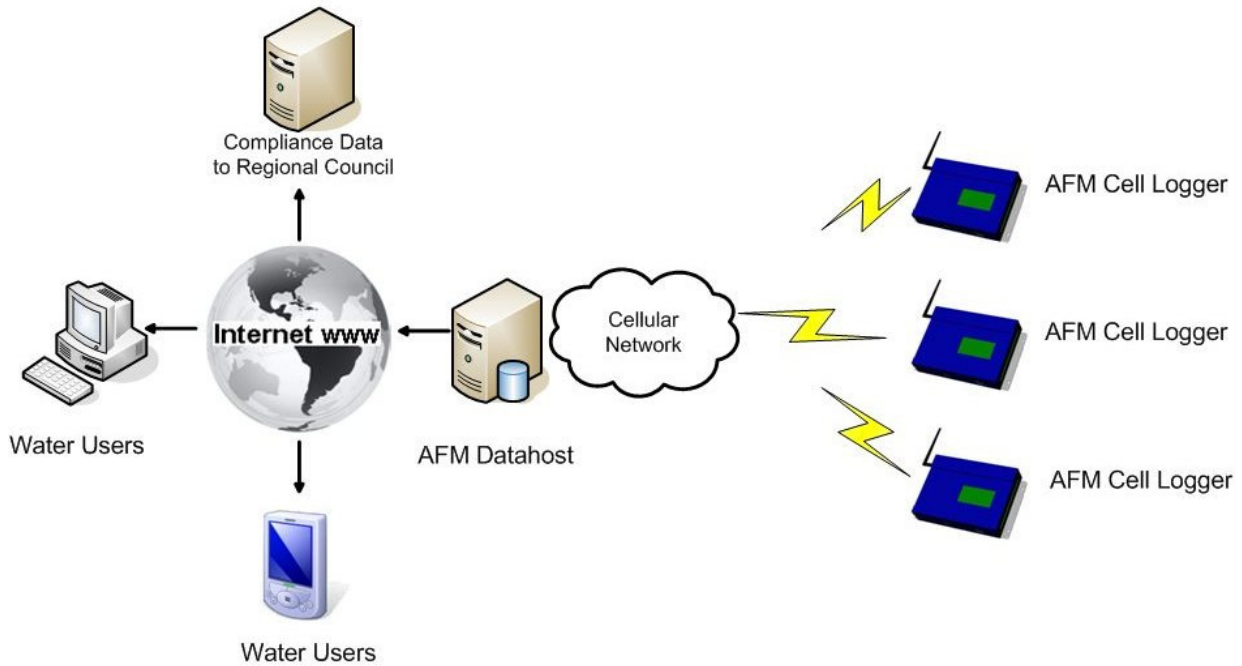
- Flexibility - Start small with one data logger and expand as your requirement does
- Simple data management reducing your time and cost
- Improved operational efficiency and greater levels of data visibility
- Cost Effective - An affordable, quality solution from an established, reputable NZ company

Please contact us to discuss how we can best provide an Aqua Flow Management System for your exact needs.

QTech - Aqua Flow Management system

The complete irrigation and resource consent data collecting solution

AFM System Overview



AFM Cell Logger - Specifications

- Supply Voltage - 8 to 30 V DC-Nominal 12 or 24 V DC
- Dimensions - L 189 x W 123 x D 42 mm
- Current Consumption - 90mA when active (Display LEDs off)
- Current Consumption - 225mA when transmitting
- 4 Analogue Inputs Single ended
 - AI 1 is well level, AI 2 pressure
 - Selectable Current input 4-20mA or 0-20mA,
 - Selectable Voltage input 0-5V or 0-10V
 - 10 bit resolution, 0.5% accuracy
- 8 Digital Inputs
 - Normally open, internal pull up
 - Opto-isolated inputs
 - On current 2.5mA@12V DC
 - LED status display
 - Transient and thermal protection
 - Pulse counting on inputs 1 & 2 - Maximum frequency 1kHz, Optional contact debounce
- Enclosure - Steel, powder coated
- Qty 4x M5 fixing holes at 177 x 89mm centres
- Weight - 350g

AFM Cell Logger Technical Data

- 2MB of Data Logging storage, providing more than 250,000 logs
- 100 year data retention via Premium NVFlash memory
- Automatic data logging every 15 minutes
- 60MHz 32 bit ARM 7 Processor
- Real time clock with battery back up
- No customer configuration needed!

Communication

- GPRS/SMS Modem 900/1800MHz
Vodafone and 2Degrees network support
The AFM Cell logger automatically selects if it needs to be SMS or data transfer mode. Normally the cell logger will be in SMS mode as this speeds up the SMS alarms/alerts to your cell phone.
- Automatic SMS alerts - send when you reach 90% of the consent and a further alert when you reach 100% of the consent
- Datahost automatically provides a "midnight reset" after collecting the data from the cell logger. This command also updates the consent volume and who is to receive SMS alarms for the following day.
- Cellular Aerial connector - SMA
- USB Host Configuration port for infield upgrades

IP67 Enclosure Option

- IP67 enclosure, 160 x 1300mm external dimensions
- Qty 4x M5 fixing holes at 142 x 80mm centres



Unit 6 Amuri Park
404 Barbadoes Street
Christchurch
New Zealand

Phone: +64 3 3663713
Fax: +64 3 3652815
E-mail: sales@qtech.co.nz
Web: www.qtech.co.nz